



Keypad switch



Website: <http://www.we-con.com.cn/en>

Technical Support: liux@we-con.com.cn

Skype: "fcwkkj" or "Jason.chen842"

Phone: 86-591-87868869

QQ Group: 465230233

Technical forum: <http://wecon.freeforums.net/>



1. General

Keypad switch is designed to input data manually; this object must work with the Keypad.User can assign letters or numbers for each switch, when the switch is triggered the data will input to the text box.

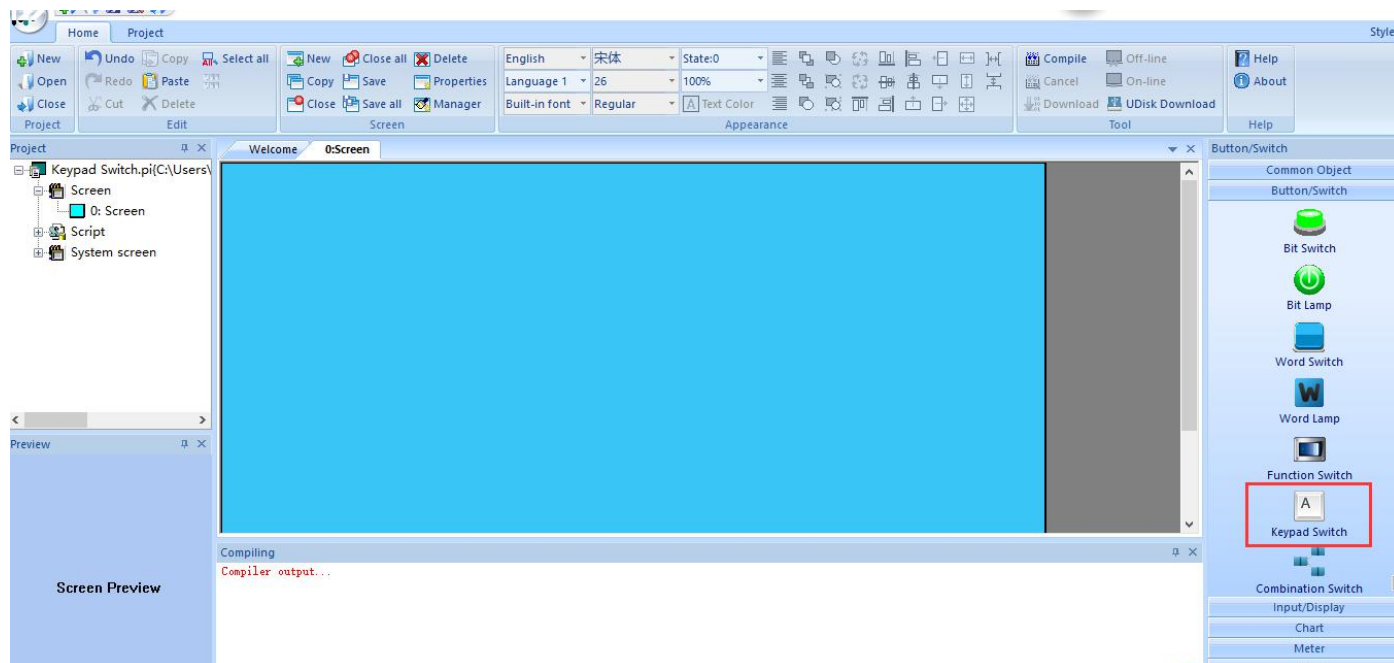


Figure 1

2. Setting

2.1 User can choose different function in the picture below.For example, “Allow input” means input letter and number. “Control bit” means different control function.

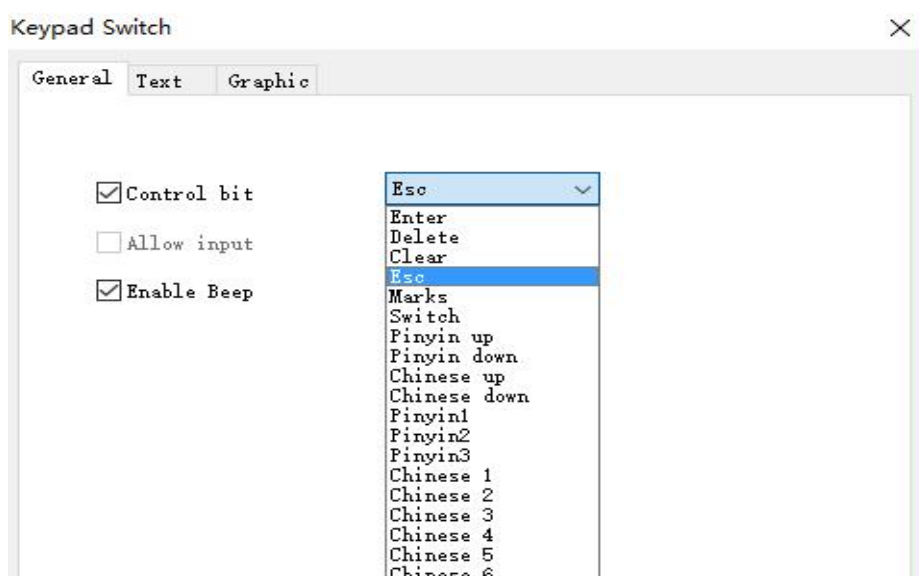
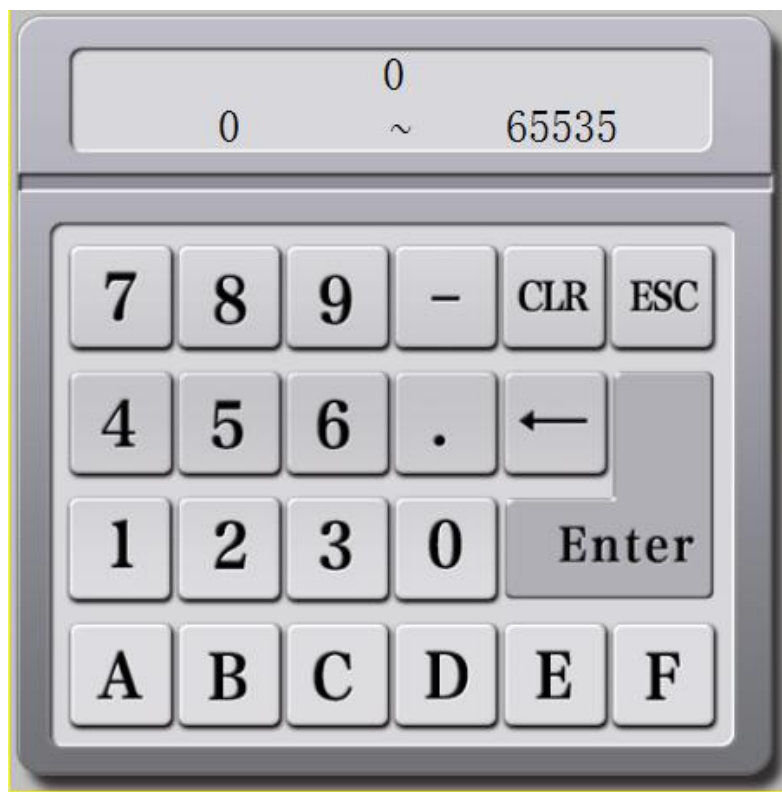


Figure 1

2.2 Keypad switch function

- Switch: keypad input control character;
- ENTER: click enter, close keyboard screen;
- DELETE: delete characters before cursor, corresponds to [DEL] on keyboard;
- CLEAR: clear the content of HSW45, it is input buffer;
- ESC: cancel currently input, close keyboard screen;
- others function key apply to T9 input method.
- Use in input method: input with ASCII character.

3. Example



Version: V1.0.0

Date: Feb 2017