

WECON PI Series project—Alarm Function



WECON Technology Co., Ltd.

Website: <http://www.we-con.com.cn/en>

Technical Support: liux@we-con.com.cn

Skype: fcwkkj

Phone: 86-591-87868869

Forum: <http://wecon.freeforums.net/>

I . Introduction

In PI series, there is some difference in alarm display from LEVI series. But the function is the same as LEVI series, the setting of alarm is similar with LEVI series.

II . Setting alarm function

Bit Alarm

Please click “Project”->”Bit Alarm” to open the setting windows, and then setting the bit alarm for project, the detailed explanation of bit alarm, please refer to the help document.

Word Alarm

Please click “Project” -> “Bit Alarm” to open the setting windows, and then setting the word alarm for project, it is similar with LEVI series, the detailed explanation of word alarm, please refer to the help document.

III. Alarm display

In PI series, alarm display will not be divide into bit alarm and word alarm, those two kind of alarms will be display in “Alarm record display” object. Alarm display in PI series will be divide into current alarm and history alarm. At present, there is no alarm bar in PI Studio software.

IV. Alarm record display Object

Its setting windows as FIG 1 shows,

1. Appearance: Setting the form display style and text color.
2. Alarm type: There are two kind of type, one is current alarm, the other is history alarm.
3. Group: Setting display range.
4. Alarm Record Setting: It used to set what are information about alarm will be displayed in this object.

As FIG 2 shows.

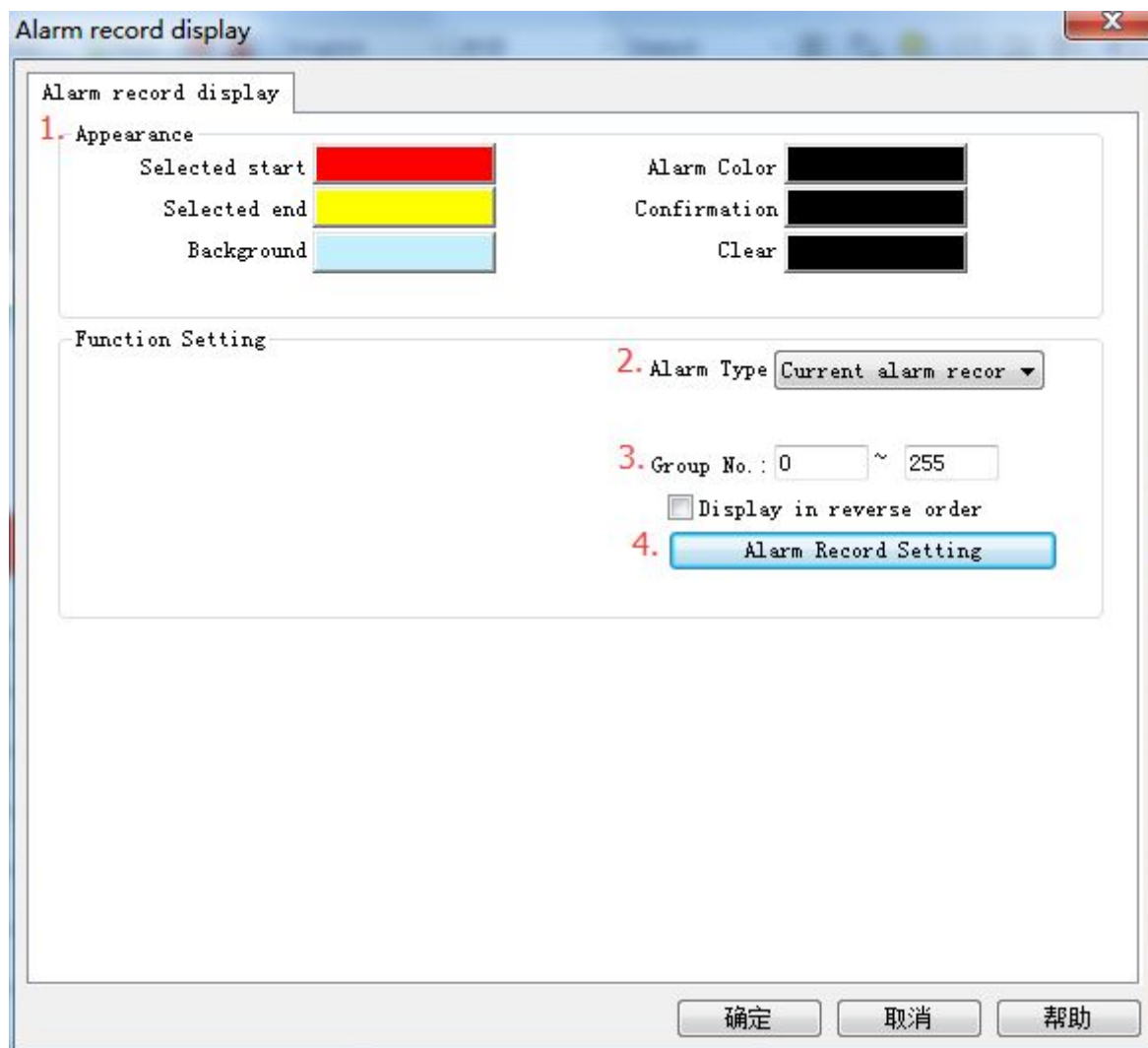


FIG. 1

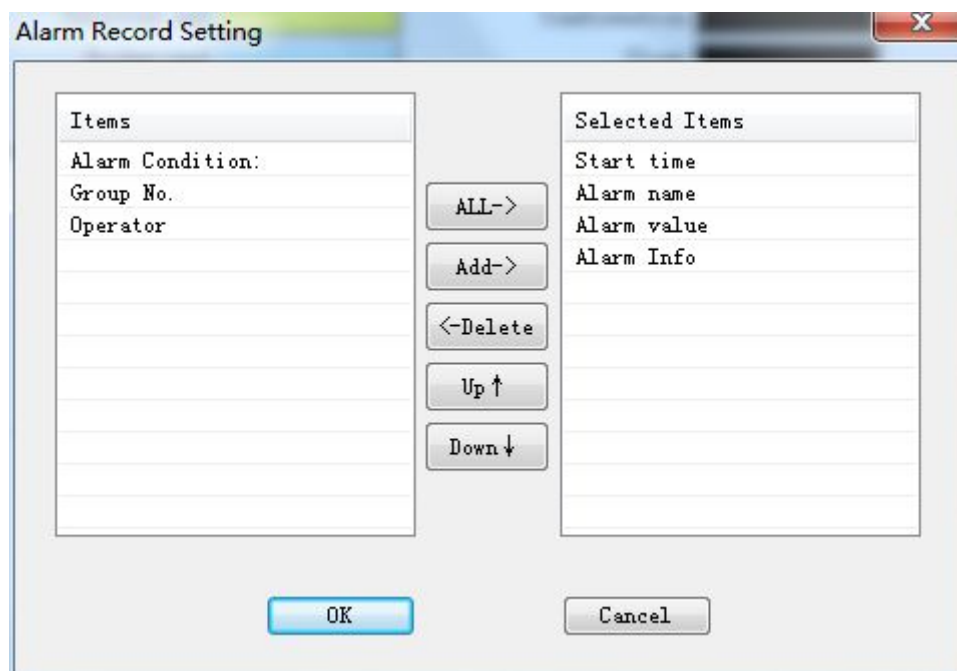


FIG. 2