

HMI time setting



WECON Technology Co., Ltd.

Website: <http://www.we-con.com.cn/en>

Technical Support: liux@we-con.com.cn

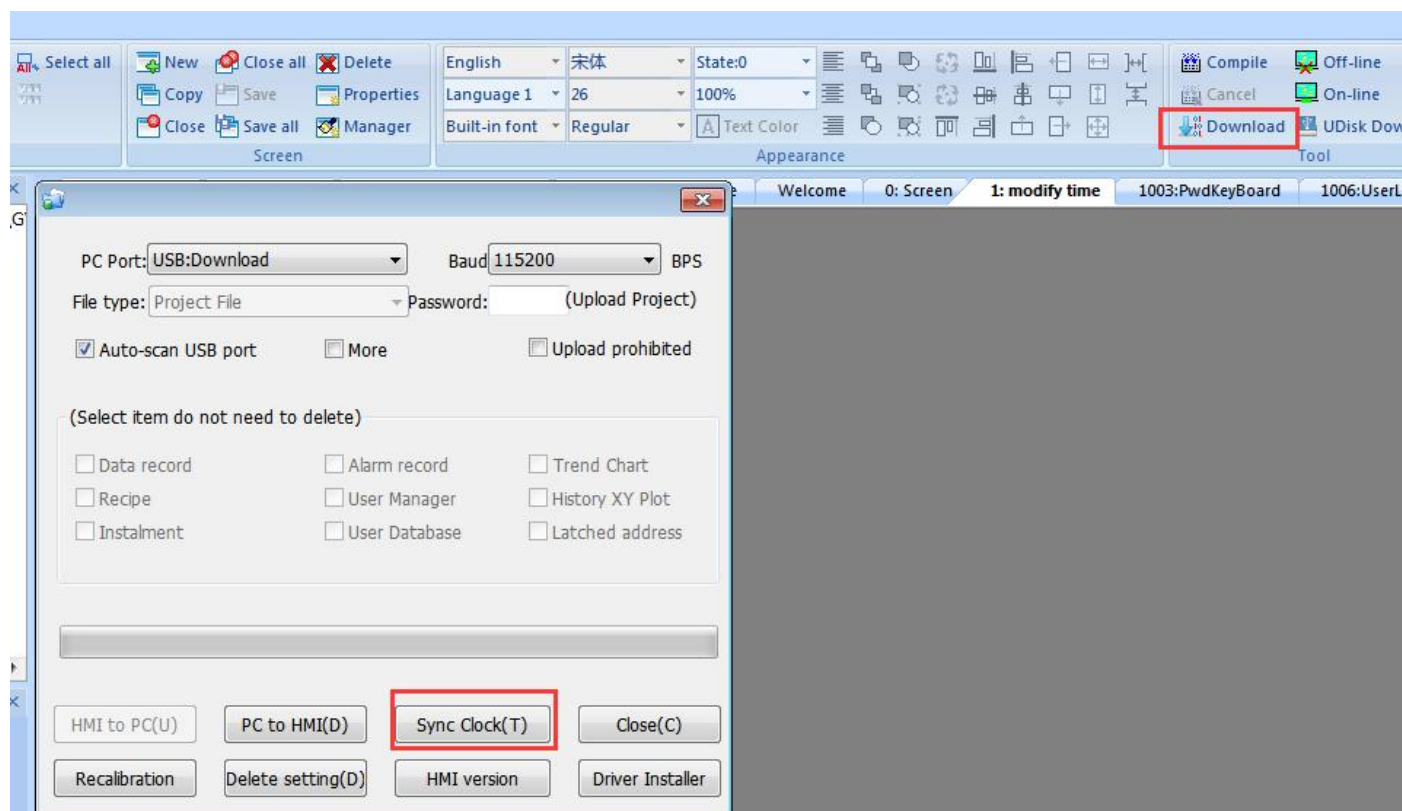
Skype: "fcwkkj" or "Jason.chen842"

Phone: 86-591-87868869

Technical forum: <http://wecon.freeforums.net/>

Solution1:

Press the download tool----->press Sync Clock to modify.(set time as computer time)



Solution 2

use the special time address to set time.I make a demo in the link below.

<https://mega.nz/#F!KE0jhLYR!GMB--QHgko0YOERU44WOfg>

HSW28	Local time: year	Range: 0-9999
HSW29	Local time: month	Range: 01-12
HSW30	Local time: day	Range: 01-31
HSW31	Local time: hour	Range: 0-23
HSW32	Local time: minute	Range: 0-59
HSW33	Local time: second	Range: 0-59
HSW34	Local time: week	On simulator:0-Sunday, 1-Monday, 2, Tuesday, 3-Wednesday, 4-Thursday, 5-Friday, 6-Saturday On HMI:0-Sunday, 2-Monday, 3-Tuesday, 4-Wednesday, 5-Thursday, 6-Friday, 1-Saturday

Time setting demo.



The screenshot shows a software window titled "HMIUI" with a standard Windows-style title bar (minimize, maximize, close buttons). Inside the window, the WECON Technology logo is in the top-left corner. In the top-right corner, there is a rounded rectangular button labeled "Time setting".

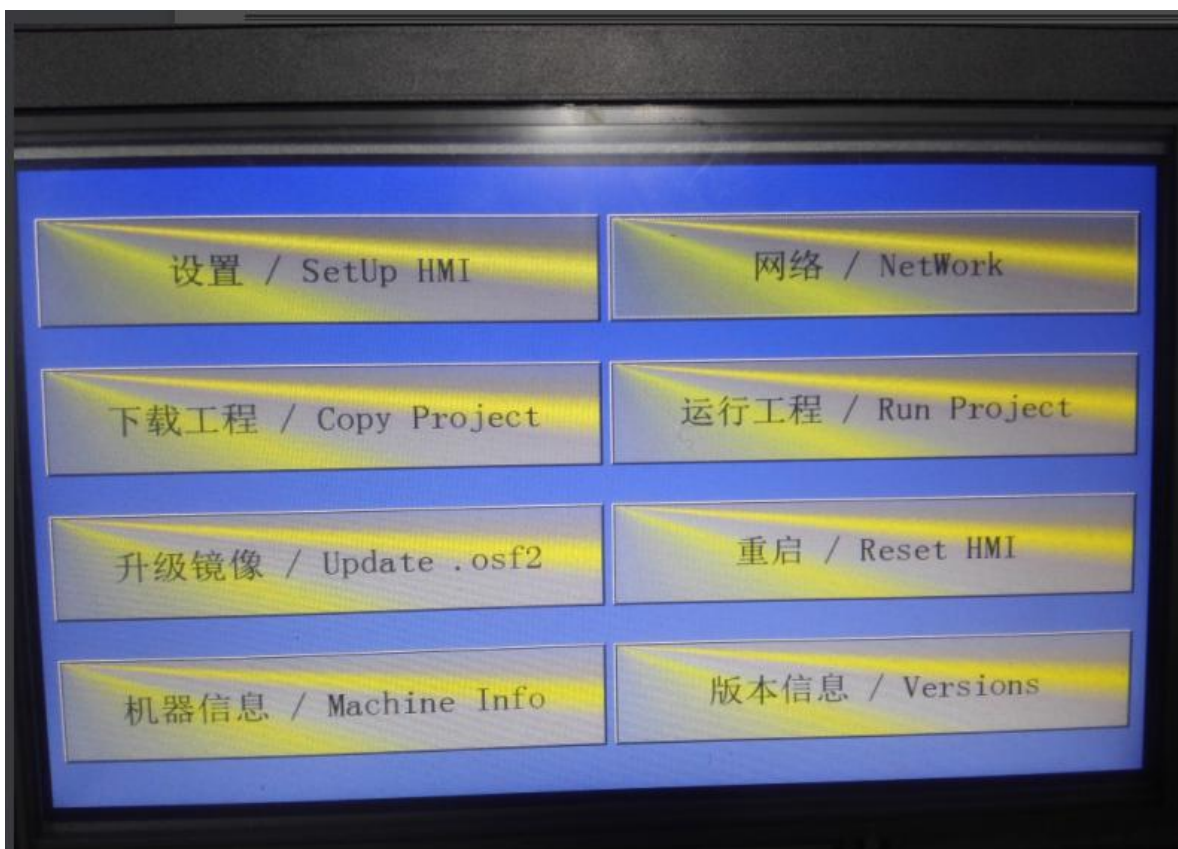
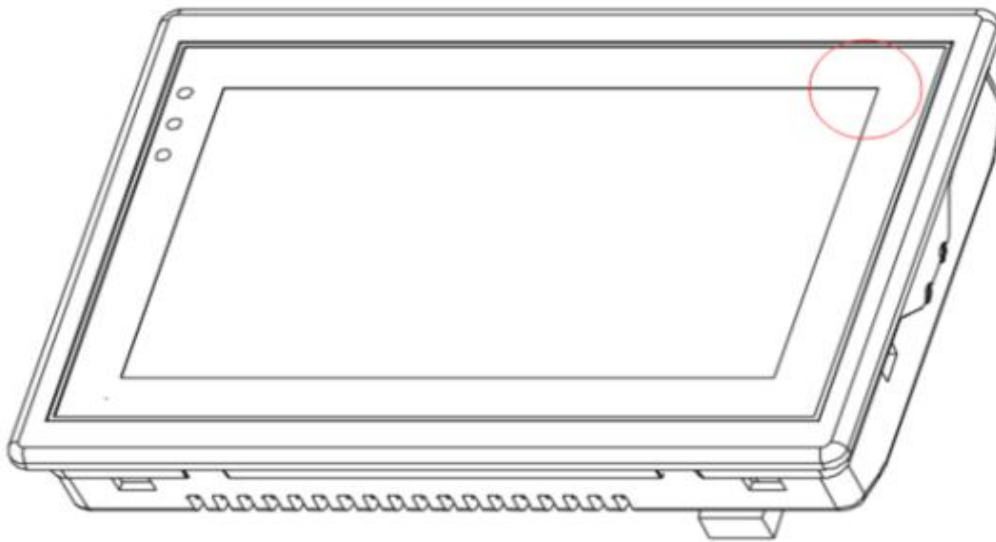
Centered in the window is a gray rectangular dialog box for time configuration. It contains the following elements:

- A blue circular close button with a white 'X' in the top-right corner.
- Two rows of input fields for time components, separated by colons:
 - Row 1: "2016" (Year), "7" (Month), "13" (Date)
 - Row 2: "15" (Hour), "2" (Minute), "18" (Second)
- Below the "Date" field is a separate input field containing the number "3", with the label "Week" positioned to its right.
- Below each input field is its corresponding label: "Year", "Month", "Date", "Hour", "Minute", and "Second".

Solution 3

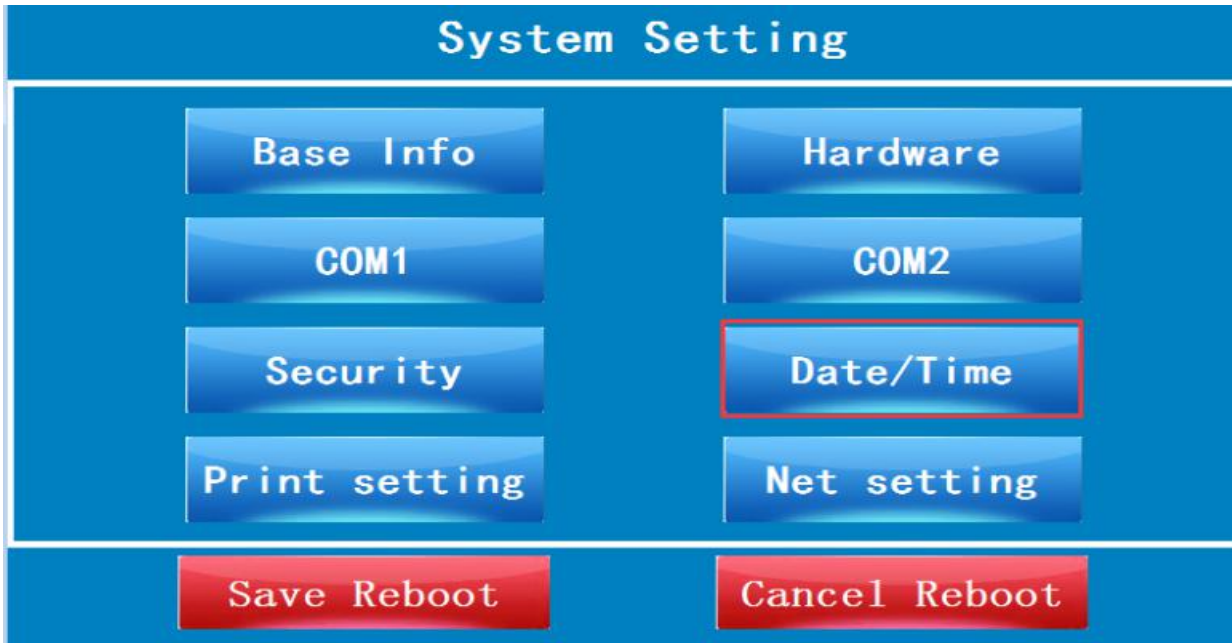
Setup screen

Keep pressing on the right top corner of Screen for 5 seconds, HMI setup screen will appear.



Setup HMI

Modify the HMI time in the **Data/Time**.



Note: If HMI version was old version before May 2016. Please don't use the **Setup HMI** to change **Date/Time**. Because the older version HMI have probability to make HMI into black screen. And it is hard to repair. It must to update HMI system by USB flash disk. The problem probability is 1%.

So, if HMI is old version before May 2016, please use special address to modify the time by solution1 or solution2

How to check HMI version time?

For example: 187003**1601**19021 (the time is January 2016)

