



User Permission



Website: <http://www.we-con.com.cn/en>

Technical Support: liux@we-con.com.cn

Skype: "fcwkkj" or "Jason.chen842"

Phone: 86-591-87868869

QQ Group: 465230233

Technical forum: <http://wecon.freeforums.net/>



1. General

User permission is one of expansion function in PI Series HMI; it provides multi-level of permission for control HMI operations. User need to set the user and group when designing project. Different groups have different permission levels for accessing. Each user should be added to certain group, it is possible to add one user to different groups.

Operating record: it records user operations information, the records files are saved in HMI flash; its path is [\\flash\\UserOperationLogs.db].

When it is on simulator mode, the files are saved in C disk, its path is [C:\\WECON\\UserMgrFile\\UserOperationLogs.db].

2. Function setting

This chapter introduces how to set the user permission in HMI project.

Operation Procedure

- 1) Create a new project or open a project;
- 2) Click the [Project] in menu;
- 3) Click [User Permission] in [Data Tool] toolbar, as Figure 1 shows;

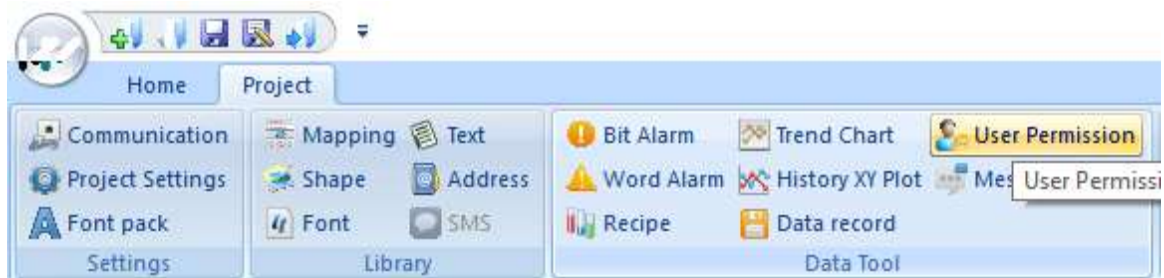


Figure 1

- 4) Edit user name, click [User0] cell under [UserName], and then enter the user name, one project allows add maximum 20 users;
- 5) Edit password, click [User0] cell under [PassWord], and then enter the user name;
- 6) Edit description, click [User0] cell under [Desc], and then enter, description is not necessary;
- 7) Check the groups for each users, there are 11 groups beside admin;
- 8) Editing groups' description, but it is not necessary;
- 9) Click [Save and Exit] button to complete settings;

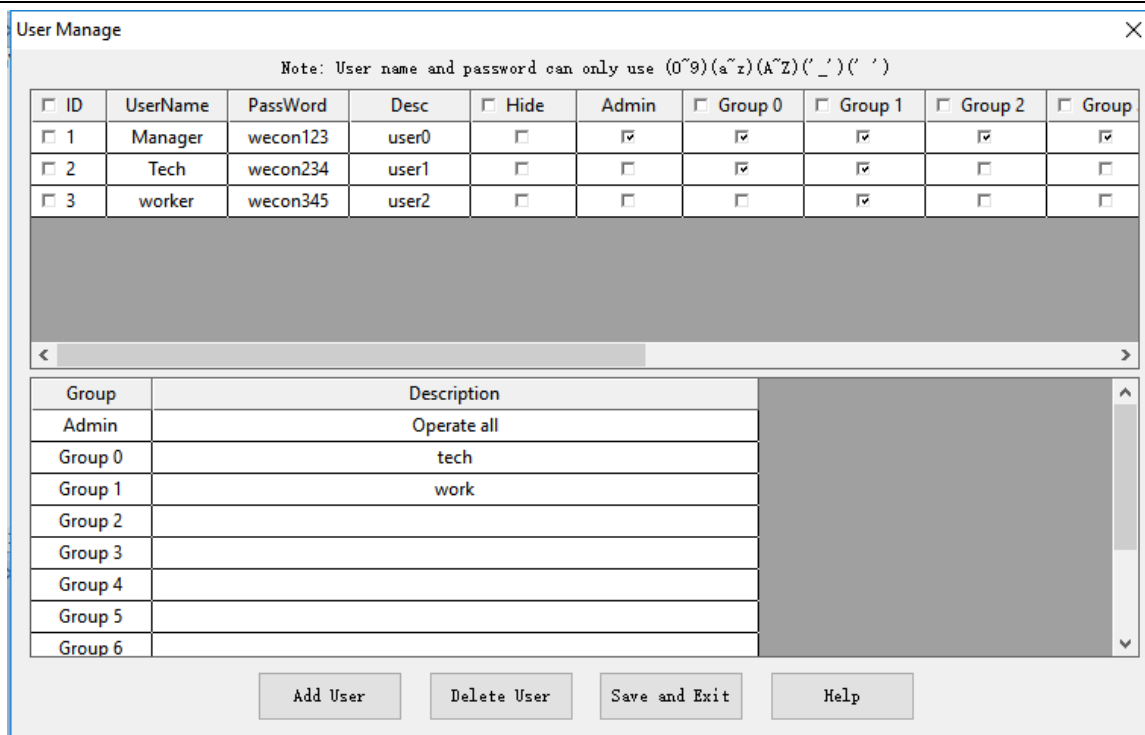


Figure 2

3. Permission settings in object

This chapter introduces how to set the user permission in each object's security setting screen.

Operation Procedure

- 1) Open the object setting windows;
- 2) Select [Security] windows;
- 3) Check the [User Permission];
- 4) Select [Level] to set permission level;
- 5) Enter [Log Message], it is for operation records, if it was empty, the operation for this object will be not be recorded;
- 6) Select the [Access Denied Setting] mode, the detailed for each mode, please refer to the help document;

4. Operation in HMI

This chapter introduces how to operate when HMI is running, especially in edit group. Using the attachment project as an example, there are four screens as following figures show;

- 1) **Operation screen:** users can do some operations in objects according to permissions;



Figure 3

- 2) **Operation records:** It shows all the operation items;



Figure 4

- 3) **Users preview:** It shows all users' information, including name, password, description and permission levels



Figure 5

- 4) **Setting:** It is used for setting user permission when HMI is running;

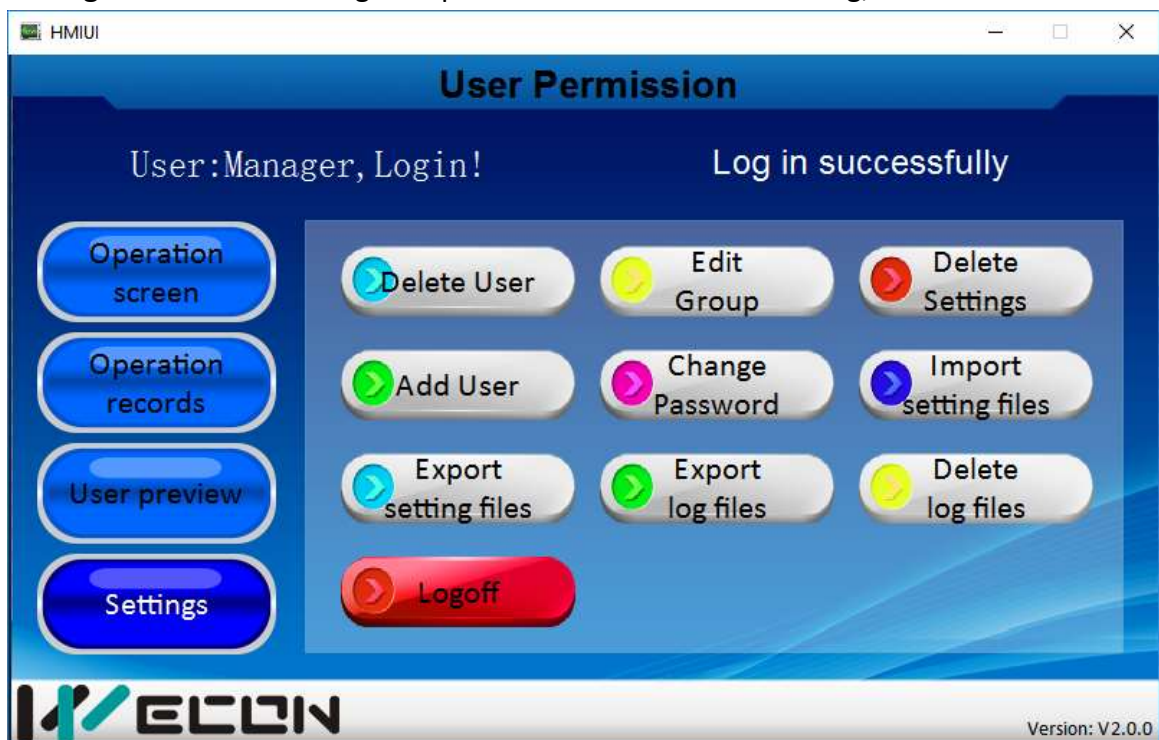


Figure 6

3.1 Operation screen

There are some bit buttons and some numeric input/display objects, some requires the user permission, if the user lacks the operation privilege, the HMI will automatically pop up the user login interface.

3.2 Operation records

This screen only displays operation records in the object, all users can viewer the operations without permission.

3.3 User preview

This screen will shows all users information including password and permission level, so only admin permission can into this screen. If there are any changes for users, please click [refresh] button on the screen to display the correct information for all users.

3.4 Settings

This screen is used for setting user permission when HMI is running, [Edit Group] is a bit complex, so this section will mainly introduce how to edit group. The edit interface as Figure 7 shows.

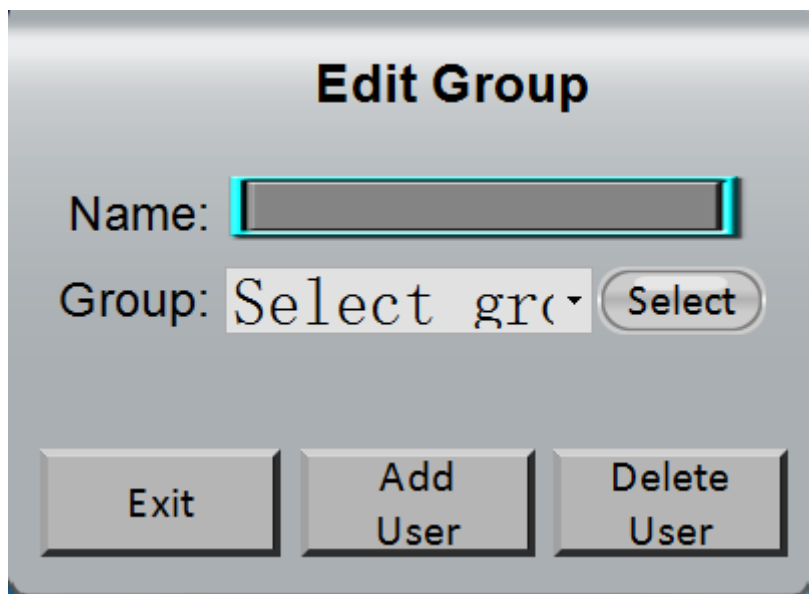


Figure 7

Operation Procedure

- 1) Enter user name (existing user) (case sensitive) or select the user in [User Preview] screen and then user name will be entered automatically;
- 2) Select the group in drop-list object;
- 3) Click [Select] button;
- 4) Click [Add User] button to add user into selected group;
- 5) Click [Delete User] button to delete user from selected group;
- 6) Click [Cancel] to close the interface;

Note

- 1) One project only allows one admin;
- 2) Each user requires different passwords;
- 3) The admin user can't be deleted;