



# Indirect Window



**Website:** <http://www.we-con.com.cn/en>

**Technical Support:** [liux@we-con.com.cn](mailto:liux@we-con.com.cn)

**Skype:** "fcwkkj" or "Jason.chen842"

**Phone:** 86-591-87868869

**QQ Group:** 465230233

**Technical forum:** <http://wecon.freeforums.net/>



# 1. General

Indirect window: it is designed for display the sub-screen. User can enter different number to display different screen in HMI. Or use a bit address to pop up specified screen.

## 2. Indirect Window object setting

This chapter introduces how to set indirect window in PIStudio

### Basic Operating procedure

#### Demo1:

- 1) Drag a Indirect window in screen. Double click indirect window object.

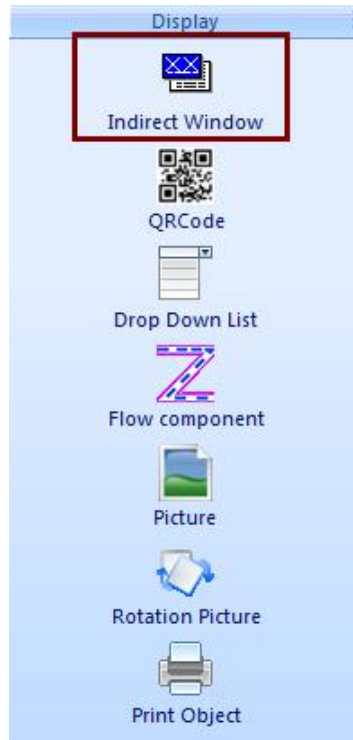


Figure 1

- 2) Set a address "HDW10". And size 200\*200.



Figure 2

- 3) Make three "sub screen" Red;Blue;Yellow.Size:200\*200

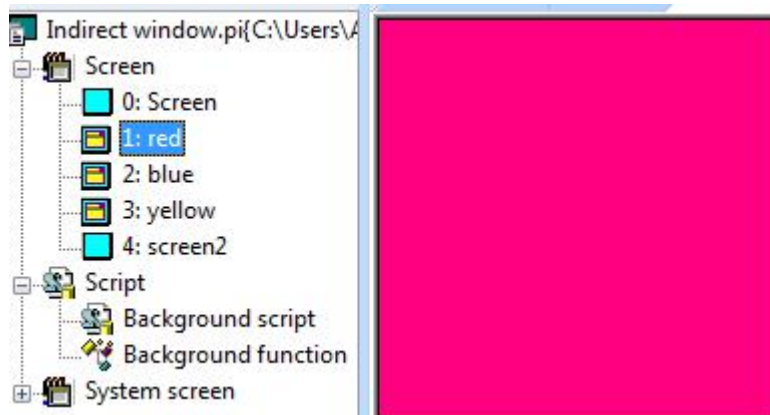


Figure 3

4) Make a “number input” and set address with HDW10. If you enter 1, indirect window will display red. If you enter 2, indirect window will display blue.



Figure 4

### Demo2:

1) Make a new in direct window in a new screen. And set a Screen No. And control display address.

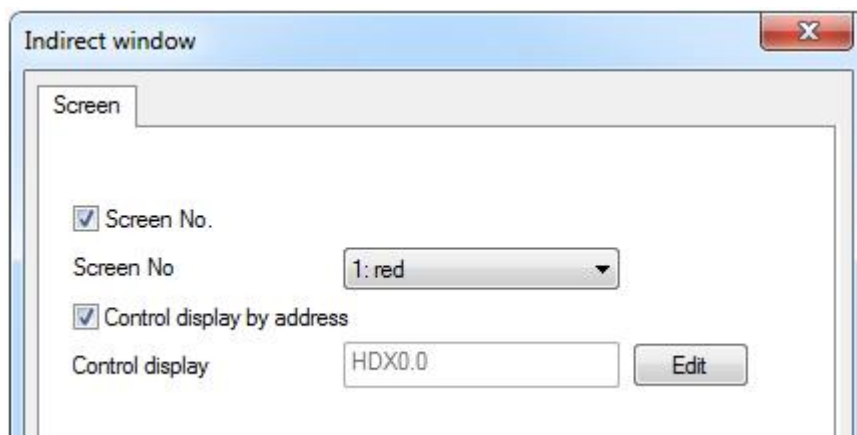


Figure 5

2) Make a bit switch"HDX0.0" to control display indirect screen.

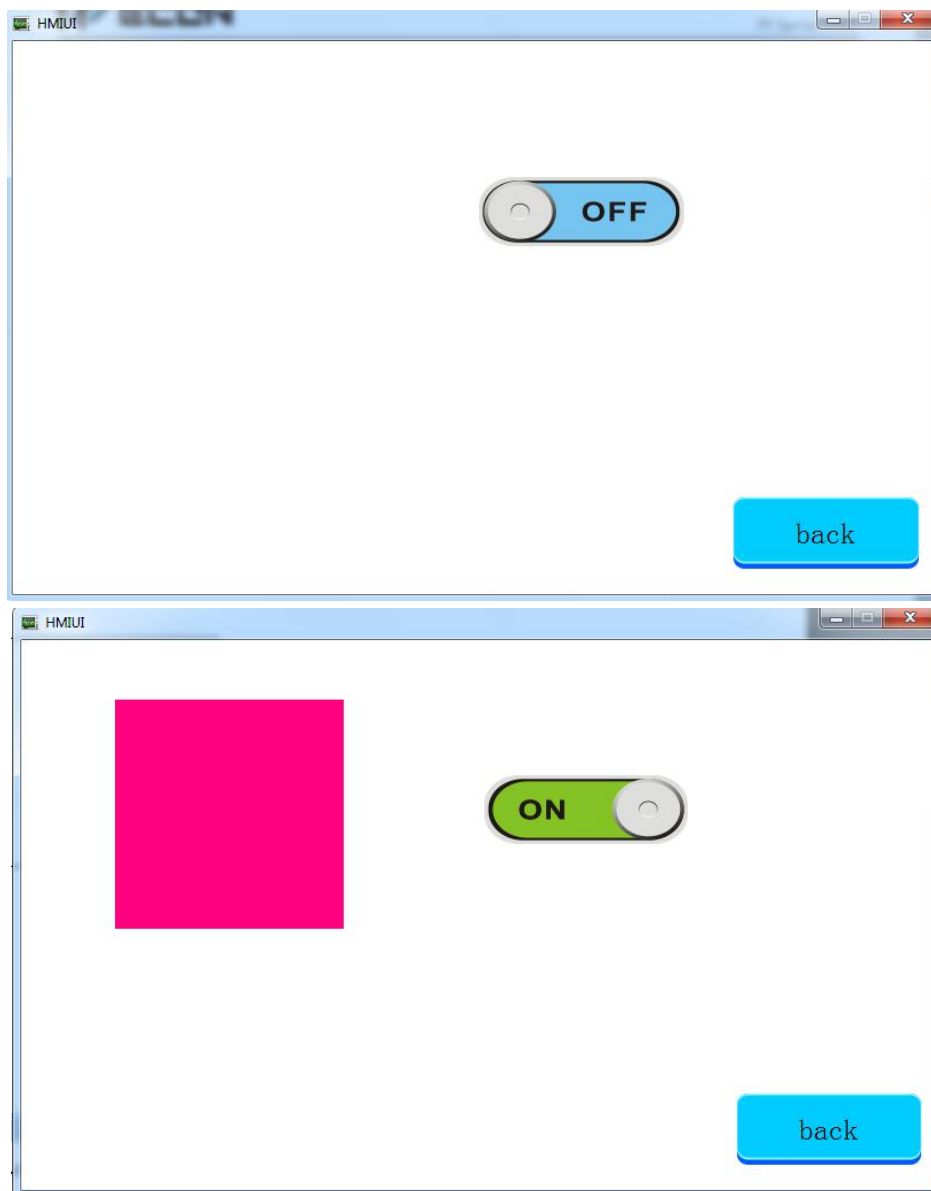


Figure 6

**Note:**Indirect window can not display system sub-screen.And in one screen,indirect window can not display two same sub-screen at same time.

Version: V1.0.0  
Date: April 2017