



Communication with Mitsubishi Q series CPU Ethernet port



Website: <http://www.we-con.com.cn/en>

Technical Support: support@we-con.com.cn

Skype: fcwkkj

Phone: 86-591-87868869

QQ: 1043098682



HMI setting

HMI communication setting:

Communication

Connection:

No.	Commu...	Protocol	Device type
1	Ethernet		MIT L02 CPU MELSEC PR...

New

Delete

Setting

Station No.

HMI No.: 0

Device No.: 0

COM

Ethernet

Protocol

MIT L02 CPU MELSEC PROTOCOL

HMI Model

PI8070

COM:

None

Setting

Device IP:

192.168.1.10:1025

Setting

Timeout:

(1500, 50, 2, 3, 0, 0)

Setting

☐ Change communication parameters

User-Defined protocol

OK

Cancel

Help

PLC Connection

Did not find any wiring instructions!

HMI Pin definition:

Did not find any wiring instructions!

Protocol: MIT L02 MELSEC PROTOCOL

Note: this protocol supports all Mitsubishi Q series CPU built-in Ethernet port.

Device IP: same to PLC IP, example:192.168.1.10

PLC port number: same to PLC, example:1025

HMI IP setting:

Project Settings ×

Project Settings HMI IP Instalment Extend

☒ HMI IP

IP: . . .

Sub mask: . . .

Gateway: . . .

Remote access password

password:

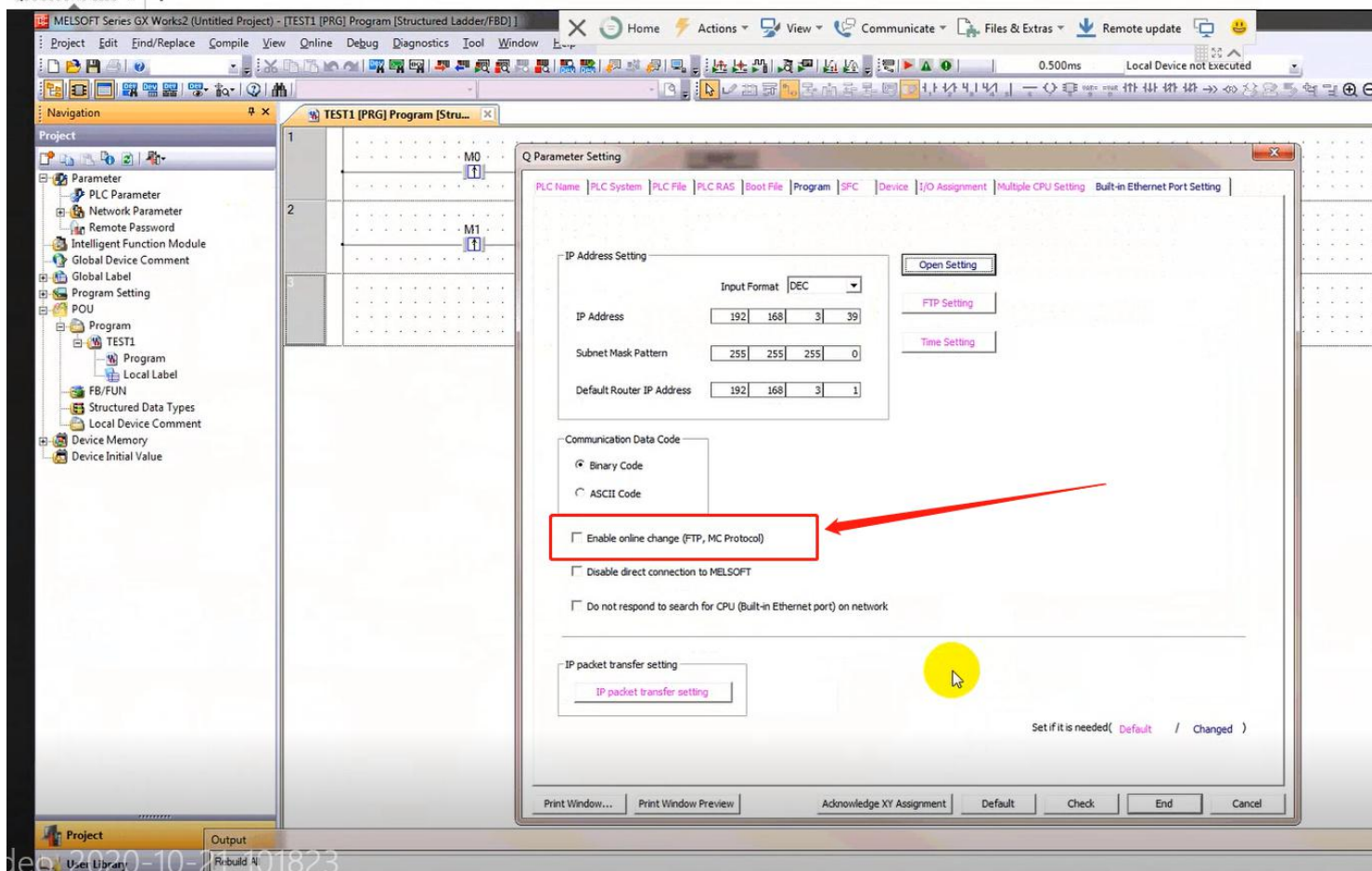
Server of HMI remote access

Server address: ▼

IP: in same segment with PLC IP, example: 192.168.1.66

PLC setting

IP setting:



IP: must be same to HMI device IP: 192.168.1.10

Data code: binary code

Select "Enable online change (FTP, MC Protocol)".

PLC port station setting:
Click [open setting]

Q Parameter Setting

PLC Name | PLC System | PLC File | PLC RAS | Boot File | Program | SFC | Device | I/O Assignment | Multiple CPU Setting | Built-in Ethernet Port Setting

IP Address Setting

Open Setting

Built-in Ethernet Port Open Setting

IP Address/Port No. Input DEC

	Protocol	Open System	TCP Connection	Host Station	Destination IP Address	Destination Port No.	Start Device to Store Predefined Protocol
1	TCP	MC Protocol		1025			
2	TCP	MELSOFT Connection					
3	TCP	MELSOFT Connection					
4	TCP	MELSOFT Connection					
5	TCP	MELSOFT Connection					
6	TCP	MELSOFT Connection					
7	TCP	MELSOFT Connection					
8	TCP	MELSOFT Connection					
9	TCP	MELSOFT Connection					
10	TCP	MELSOFT Connection					
11	TCP	MELSOFT Connection					
12	TCP	MELSOFT Connection					
13	TCP	MELSOFT Connection					
14	TCP	MELSOFT Connection					
15	TCP	MELSOFT Connection					
16	TCP	MELSOFT Connection					

(*) IP Address and Port No. will be displayed by the selected format.
Please enter the value according to the selected number.

End Cancel

Set if it is needed(Default / Changed)

Print Window... | Print Window Preview | Acknowledge XY Assignment | Default | Check | End | Cancel

Protocol: TCP
Open system: MC protocol
Host station: same to PLC port in HMI setting :1025
After setting, please download to PLC and restart.
If not HMI, use V-Box, please update the firmware to 20200715 version or newer.