



# Communication with ORMON CJ2M



Website: <http://www.we-con.com.cn/en>

Technical Support: [support@we-con.com.cn](mailto:support@we-con.com.cn)

Skype: fcwkkj

Phone: 86-591-87868869 EXT 886



# 1.General

This example introduces how to establish communication between Wecon VBOX and Ormon CJ2M PLC.

## 2.Operation Steps

### 2.1 Communication settings

#### 2.1.1 Vbox:

1. Configuration>>Communication>>Add ethernet port>>Set the communication parameter as below:

New Port
✕

Port	Ethernet	Device Type	OMRON
Protocol	OMRON CJ TC...	Device Station No.	0
Device Station No.	OMRON CJ UDP FINS Ethernet	Retry Count	2
Receive Timeout	OMRON CJ TCP FINS Ethernet	Wait Timeout	1500 ms
Length	0	Integration Interval	0
Retry Timeout	0 ms	Delay Time	0 ms
Enable Broadcast	<input type="checkbox"/> OFF	Network type	udp_client
		Port	9600
		Broadcast Station No.	0

Cancel
OK

2. Set the vbox ip(need to be the same segment with plc)

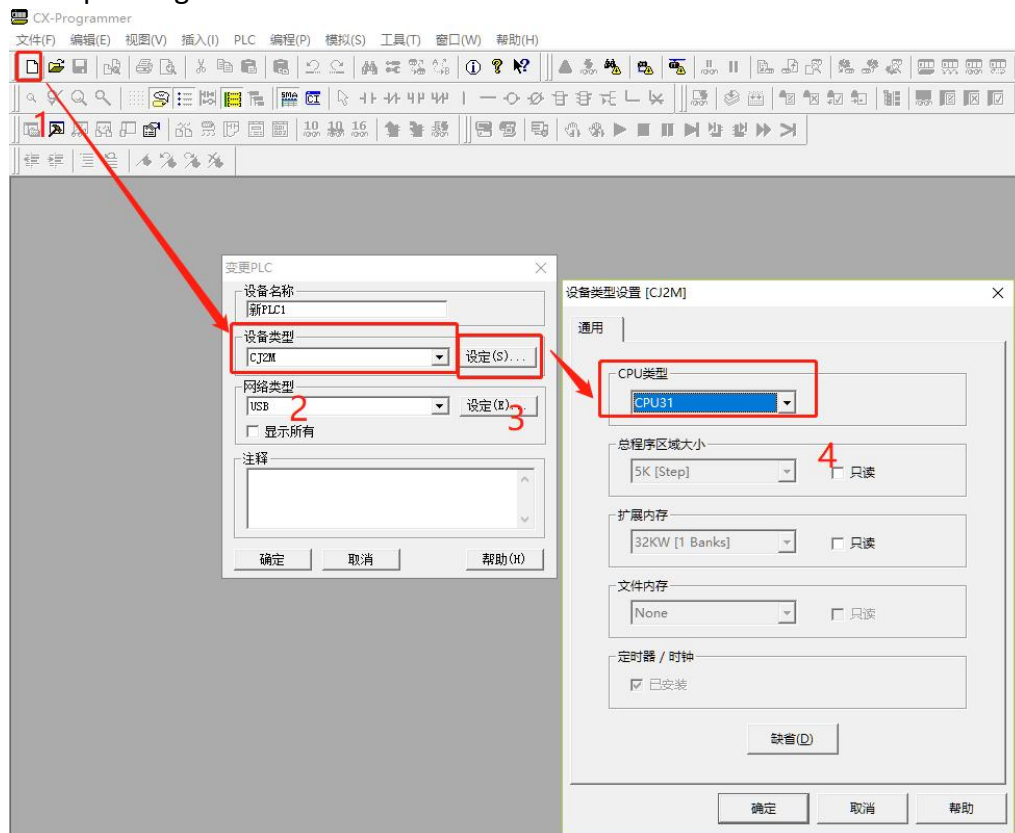
New Port

Protocol	OMRON CJ TC...	Device Station No.	0
Device Station No.	0	Retry Count	2
Receive Timeout	50 ms	Wait Timeout	1500 ms
Length	0	Integration interval	0
Retry Timeout	0 ms	Delay Time	0 ms
		Network type	udp_client
		Port	9600
Enable Broadcast	OFF	Broadcast Station No.	0
IP Address	192.168.43.200		

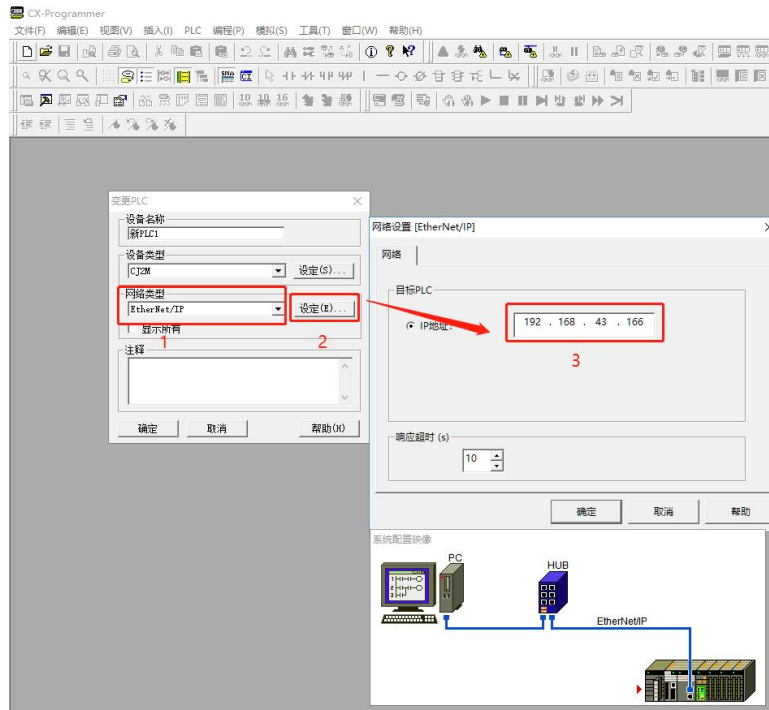
Cancel
OK

## 2.1.2 CX Programmer:

### 1. Select the corresponding model and set the PLC CPU

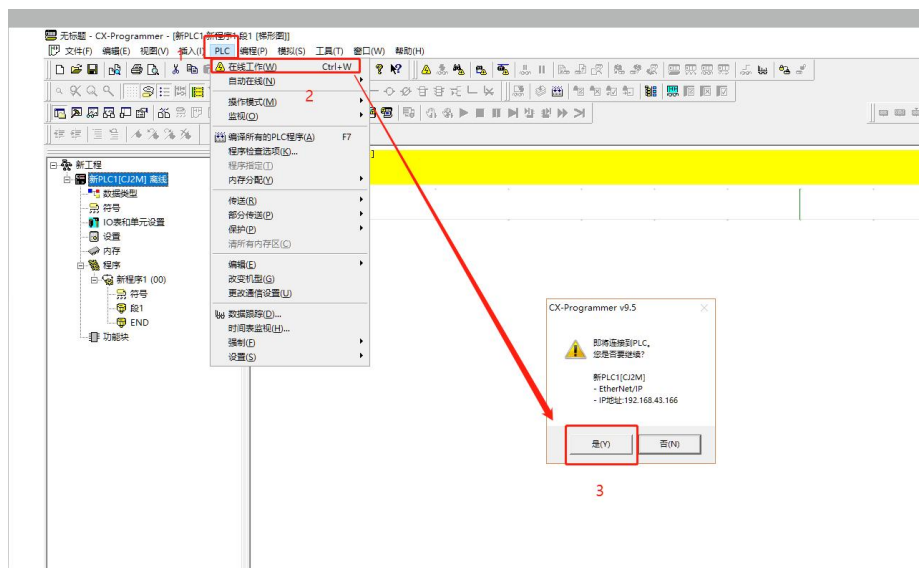


## 2. Select the communication target PLC



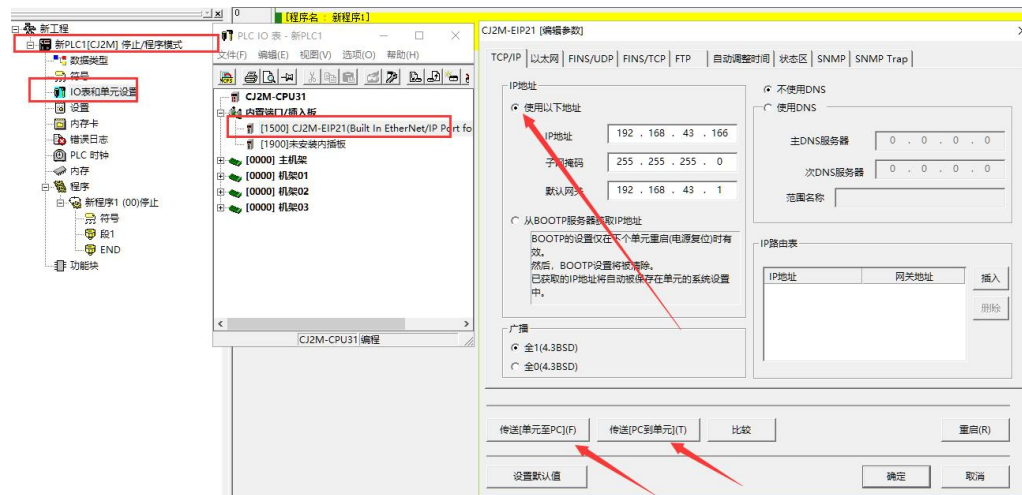
## 3. Modify the IP of PLC

Click PLC, select online work, a prompt box will pop up, select yes to connect.



## 4. Need to change the PLC RUN mode to edit mode

## 5. Change the PLC IP from software:



6. Change the PLC IP from hardware. There is a corresponding knob on the PLC to modify the value of the last digit of the IP. In this example it is 192.168.43.166, so 166(Decimal) is converted to A6(Hexadecimal), NODE Turn the two knobs to A6 and then restart.

## 2.2 Establish connection

Use a ethernet cable to connect the VBOX and PLC on the same Local Area Network, or connect the VBOX to PLC directly with ethernet cable. Both methods can be connected.