



Communication with S7-200 Smart



Website: <http://www.we-con.com.cn/en>

Technical Support: support@we-con.com.cn

Skype: fcwkkj

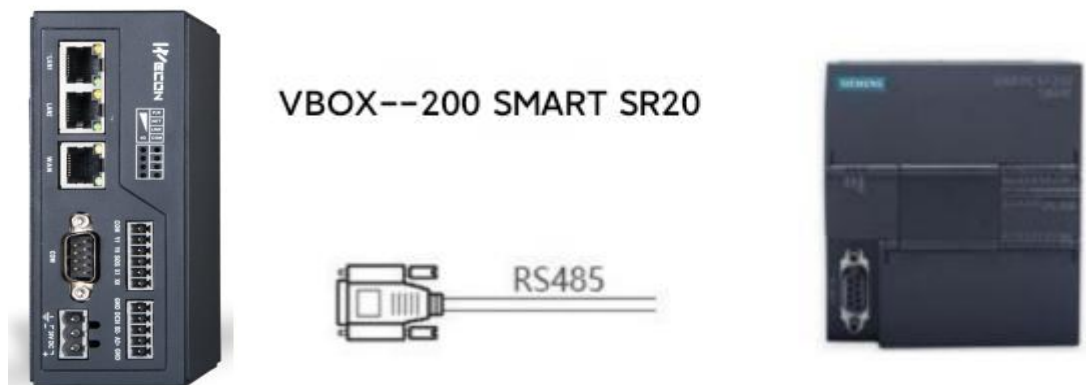
Phone: 86-591-87868869 EXT 88



1.General

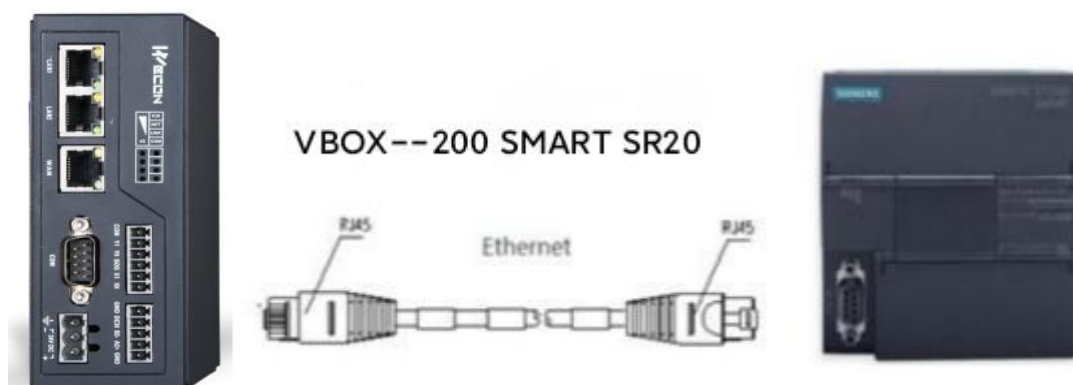
This example introduces how to establish communication between Wecon VBOX and Siemens S7-200 Smart.

The connection diagrams of the two communication methods, serial port and network port, are as follows:



VBOX side: COM1 interface

PLC side: RS 485 (3 connects to 485+, 8 connects to 485-)



VBOX side: RJ45 Ethernet interface

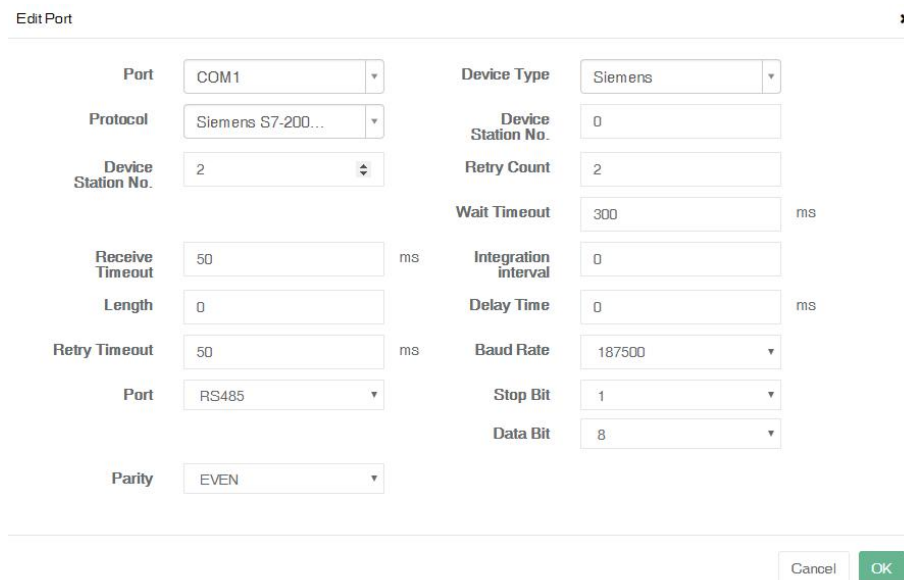
PLC side: RJ45 Ethernet interface

2.Operation Steps

2.1 RS485 serial port communication

2.1.1 VBOX communication settings

Configuration>>Communication>>Add new port>>Set the communication parameter as below:



2.1.2 PLC communication settings

STEP 7-MicroWIN SMART:

Main>>system block>>RS485 port, change the baud rate to 187.5kbps



2.1.3 Establish connection

The VBOX uses the COM1 port, and the PLC uses the RS485 port

COM1 port pin 1 is connected to RS485 port pin 3

COM1 port pin 6 is connected to RS485 port pin 8

The pin connections are as follows:

COM1 PIN Definition

PIN	Definition	PIN	Definition
1	RS422 TX+ (RS485+)	2	RS232 RXD
3	RS232 TXD	5	GND
6	RS422 TX- (RS485-)	8	RS422 RX-
9	RS422 RX+		

H series VBOX COM1 Pin Definition

2.2 Ethernet port communication

2.2.1 VBOX communication settings

Configuration>>Communication>>Add new port>>Set the communication parameter as below:

New Port

Port

Ethernet

Protocol

Siemens S7-200...

Device Station No.

2

Receive Timeout

50

ms

Length

0

Retry Timeout

0

ms

Enable Broadcast

OFF

IP Address

192.168.1.202

Device Type

Siemens

Device Station No.

0

Retry Count

2

Wait Timeout

1500

ms

Integration interval

0

Delay Time

0

ms

Network type

top_client_2n

Port

102

Broadcast Station No.

0

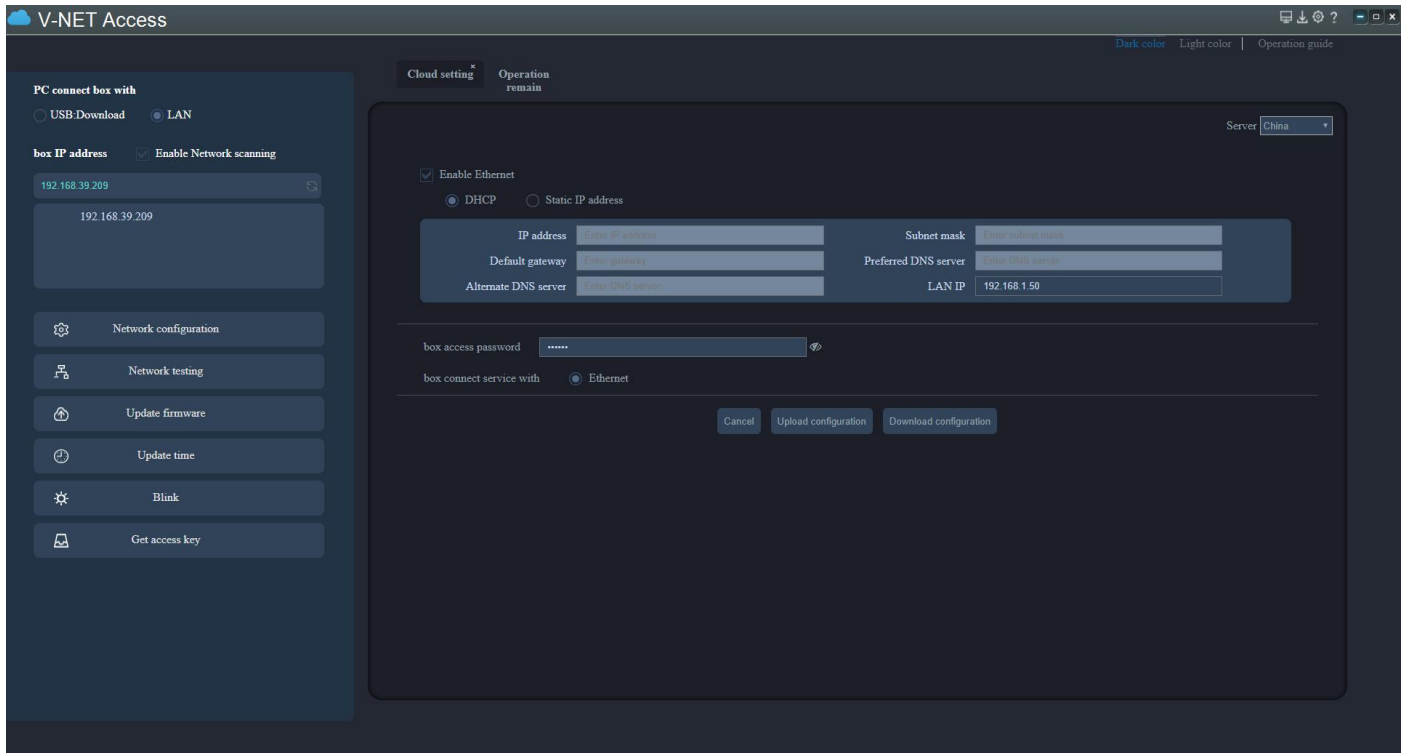
Cancel

OK

IP Address "192.168.1.202" is PLC IP address, need to be the same network segment as VBOX.

2.2.2 IP settings

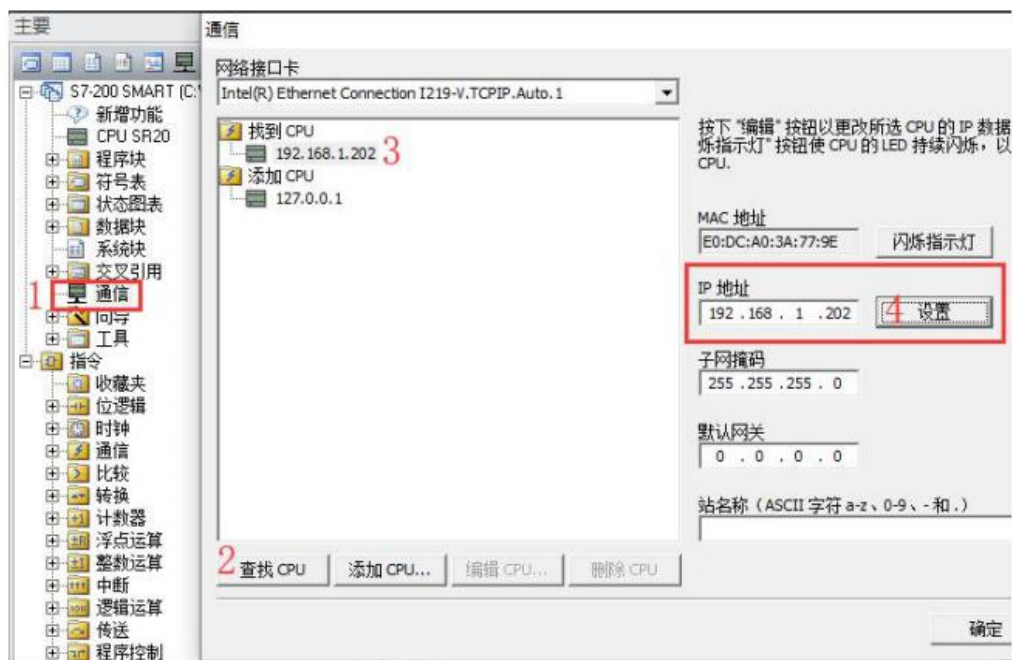
VBOX: Networking configuration>>LAN IP set as"192.168.1.xx"(make sure there is no IP conflic)



STEP 7-MicroWIN SMART:

Main_Communication_Search CPU, find CPU (if you need to change IP, click edit, modify IP, click set), click OK

Note: The IP of the PLC must be consistent with the IP set on the HMI(communication>>TCP/IP parameters)



2.2.3 Establish connection

Use a ethernet cable to connect the VBOX and PLC on the same Local Area Network, or connect the VBOX to PLC directly with ethernet cable. Both methods can be connected.