



# V-NET APP Manual

## V1.0

Website: <http://www.we-con.com.cn/en>

Phone: 86-591-878688

Version: V1.0



## Content

<b>1. Login page and home page.....</b>	<b>2</b>
1.1 Login.....	2
1.2 Registration.....	2
1.3 Retrieve password.....	3
1.4 Main menu.....	4
<b>2. Main menu.....</b>	<b>4</b>
2.1 Add device.....	4
2.1.1 Add V-BOX/ig HMI.....	5
2.1.2 Get machine code.....	6
2.2 My follow.....	8
2.3 Share device.....	8
2.4 Monitoring point.....	10
2.5 Map.....	10
2.6 Web Cloud SCADA.....	11
2.7 Message.....	12
2.8 Account management.....	13
2.8.1 Modify avatar.....	13
2.8.2 Modify mailbox.....	13
2.8.3 Change password.....	14
2.9 Settings.....	14
2.9.1 Clear the cache.....	15
2.9.2 Current version.....	15
2.9.3 Homepage settings.....	16
2.9.4 Multilingual button.....	16
2.9.5 About.....	17
<b>3. V-BOX module.....</b>	<b>17</b>
3.1 Real-time data.....	17
3.2 Historical data.....	18
3.3 Web Cloud SCADA.....	18
3.4 Device information.....	19
<b>4. ig series IoT HMI.....</b>	<b>21</b>
4.1 Real-time data.....	21
4.2 Historical data.....	22
4.3 Remote monitoring.....	23
4.5 Device information.....	24
<b>5. Transfer device.....</b>	<b>25</b>

# 1. Login page and home page

## 1.1 Login

When a user logs in, the login account can be a mobile phone number or mailbox (subject to the registered account). The login succeeds only when the entered mobile phone number or email is legitimate and matches the password.

The same account can be logged in on both PC and APP, but not on different PC/APP at the same time, otherwise the account that logs in first will be forced to be log out. The login interface is as shown in the figure below.

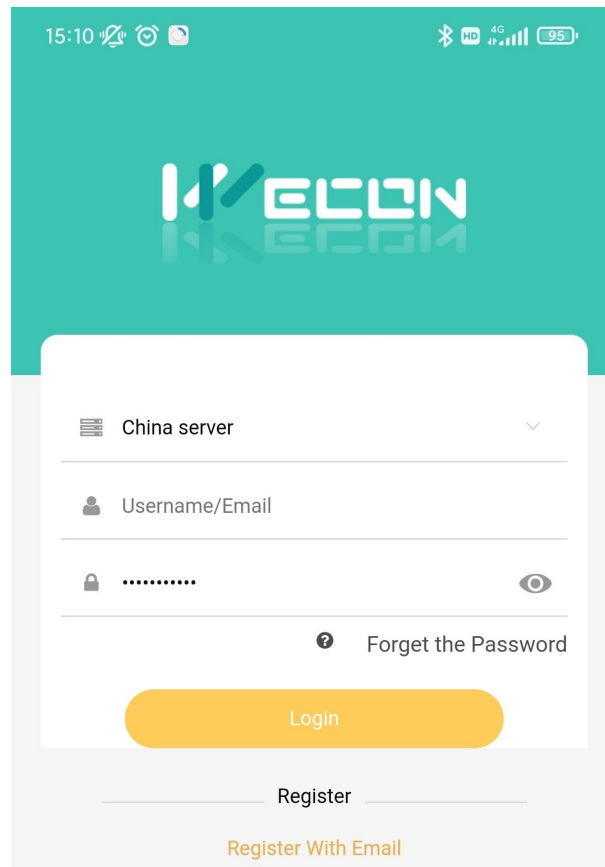


Figure 1-1

## 1.2 Registration

You could register by mobile phone number and mailbox. Among them, enterprise name and mailbox are required items. There are three nodes, which are China node, ASEAN node and European node. After selecting a node, the site will automatically jump to the site under the node server. If no selection is made, the China node is selected by default.

Mobile phone number registration needs to receive SMS verification code, and the registration is only successful if the mobile phone number entered is legitimate and the SMS verification code matches; Mailbox registration requires link activation, and the registration is only successful if you click on the activation link you receive by your mailbox, as shown in the figure below.

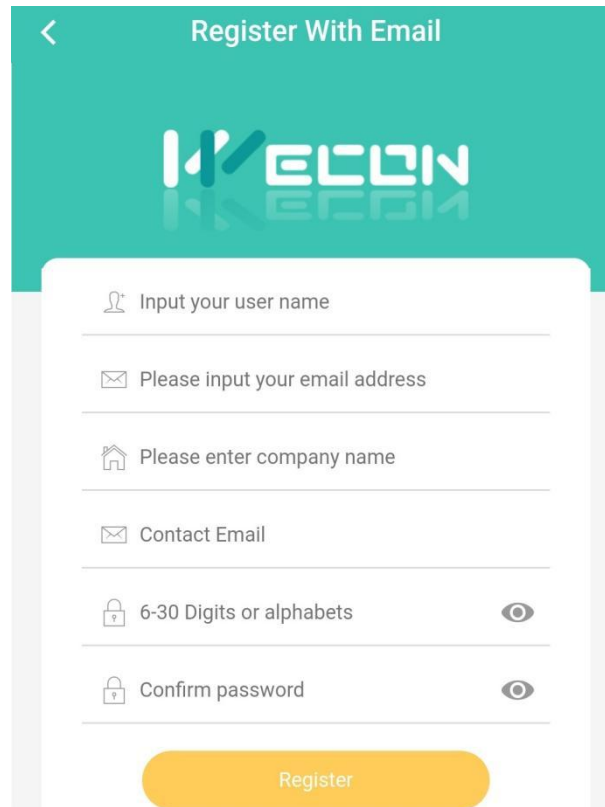


Figure 1-2

### 1.3 Retrieve password

When you forget the login password, the password can be retrieved through the mobile phone number or mailbox. The password can only be modified successfully if the verification code entered is consistent with the verification code received by your mobile phone or email, and the password entered is legitimate. As shown in the figure below.

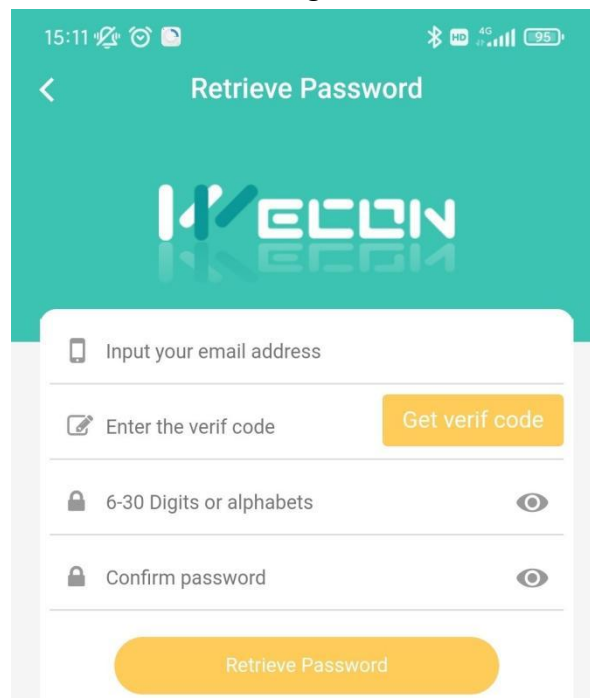


Figure 1-3

## 1.4 Main menu

Web Cloud SCADA is the default page after logging in to the platform. Click on the upper left corner to jump to the main menu page, including Device, My follow, Share device, Monitoring points, Map, Web SCADA, Message, Account management, Setting, Logout, as shown in the figure below.

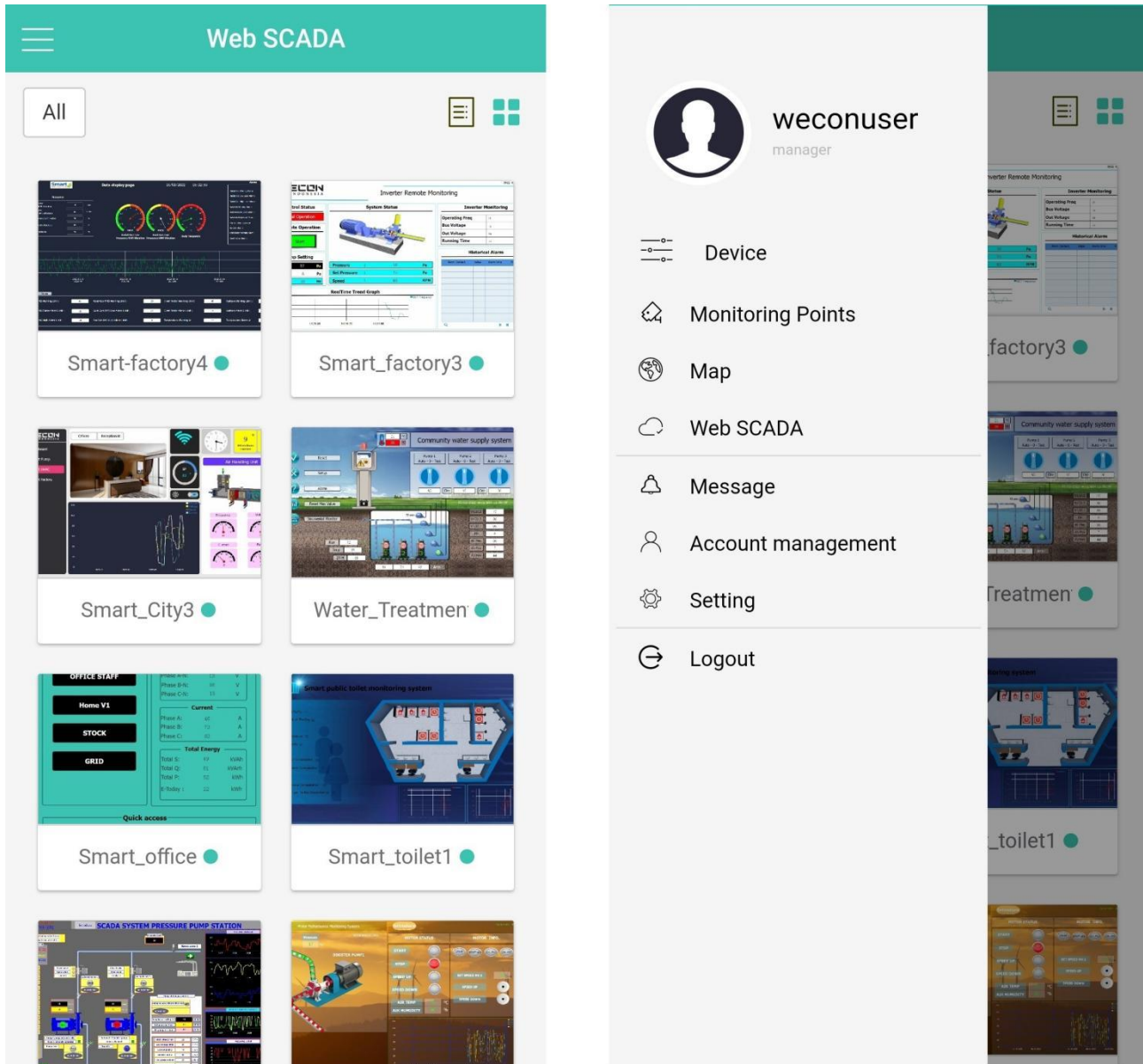


Figure2-4

## 2. Main menu

### 2.1 Add device

V-BOX and ig HMI can be added to the device list, and all the V-BOX and ig HMI under this account will be displayed as a tree menu of multi-level grouping.

### 2.1.1 Add V-BOX/ig HMI

When the account logs in to the APP for the first time, you need to add a V-BOX/ig HMI to bind to the account. The account bound to V-BOX/ig HMI is called "administrator account". **A device can only be bound by one account, that is, administrator account is unique.**

Select the device in the main menu, and click the "+" button in the upper right corner to bind V-BOX/ig HMI. Binding a V-BOX/ig HMI, you need to know the machine code and password, input the device alias, and select the group and industry application of the added device. If the administrator has already created a device group, you can also add the added devices to another group. The device binding interface is shown as below.

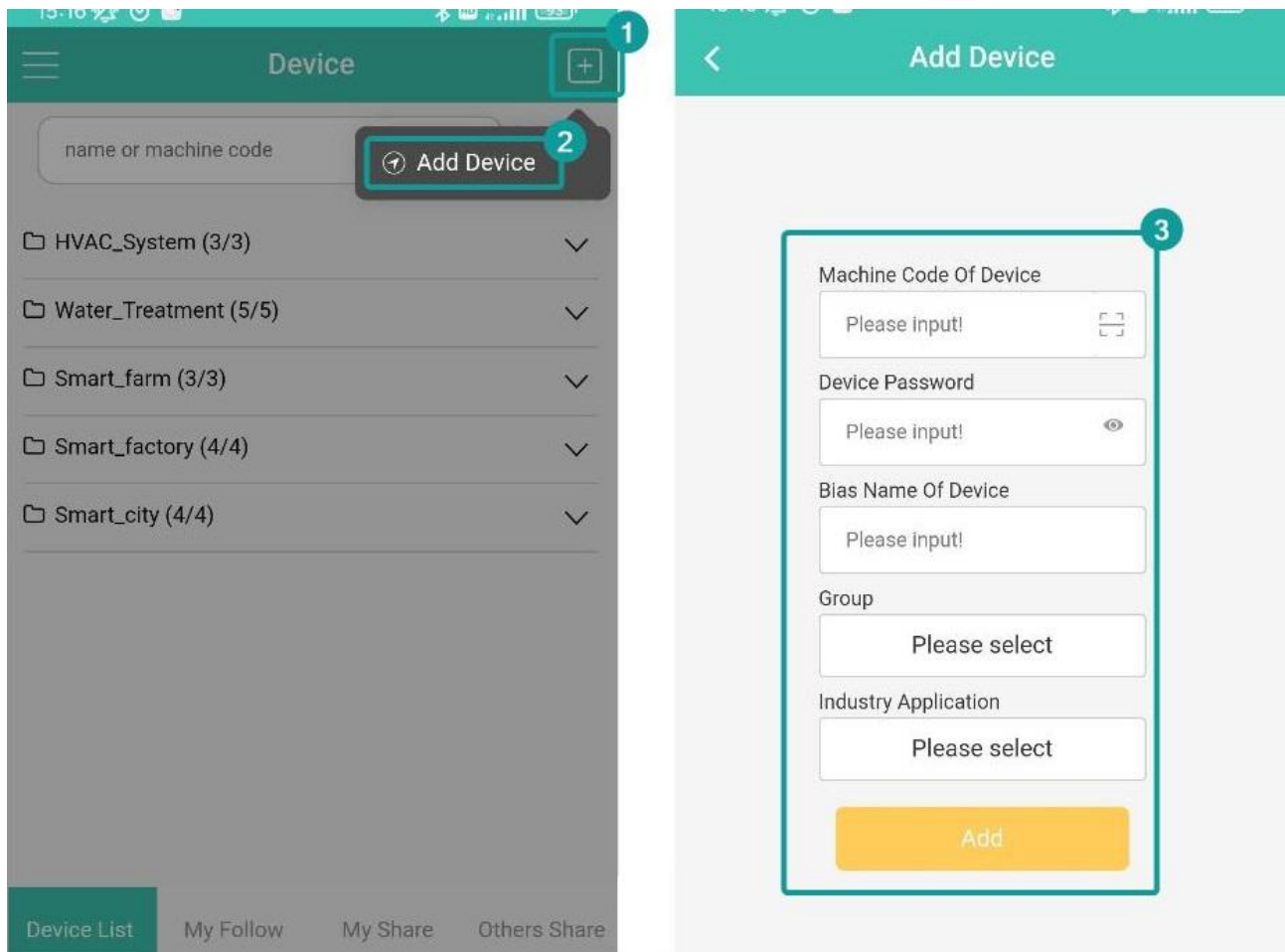


Figure 2-1

#### Steps:

- ① Select the device in the main menu, and click the "+" button in the upper right corner to bind V-BOX/ig HMI.
- ② Select "add device".
- ③ Enter the machine code of the device, and each V-BOX/ig HMI has a unique and independent machine code. For the machine code acquisition, see "3. 1.2 Get machine code".
- ④ Enter the device password. The default password is 8888888.
- ⑤ Enter a device alias to customize the name of the device.
- ⑥ Select the group (new grouping can only be created in PC).
- ⑦ Industry application options are built into the system, including smart home, Internet of

Vehicles, smart security, smart grid and so on.

- ⑧ After the information is filled in correctly, it can be added successfully.

## 2.1.2 Get machine code

### Get V-BOX machine code

V-BOX can only be connected to the PC through the configuration button on the PC side, using an USB download cable or LAN retrieval with a network cable. When the computer detects the V-BOX, it will be displayed in the list, as shown in the figure below. "Detected V-BOX:H-4G", and you can get the machine code.

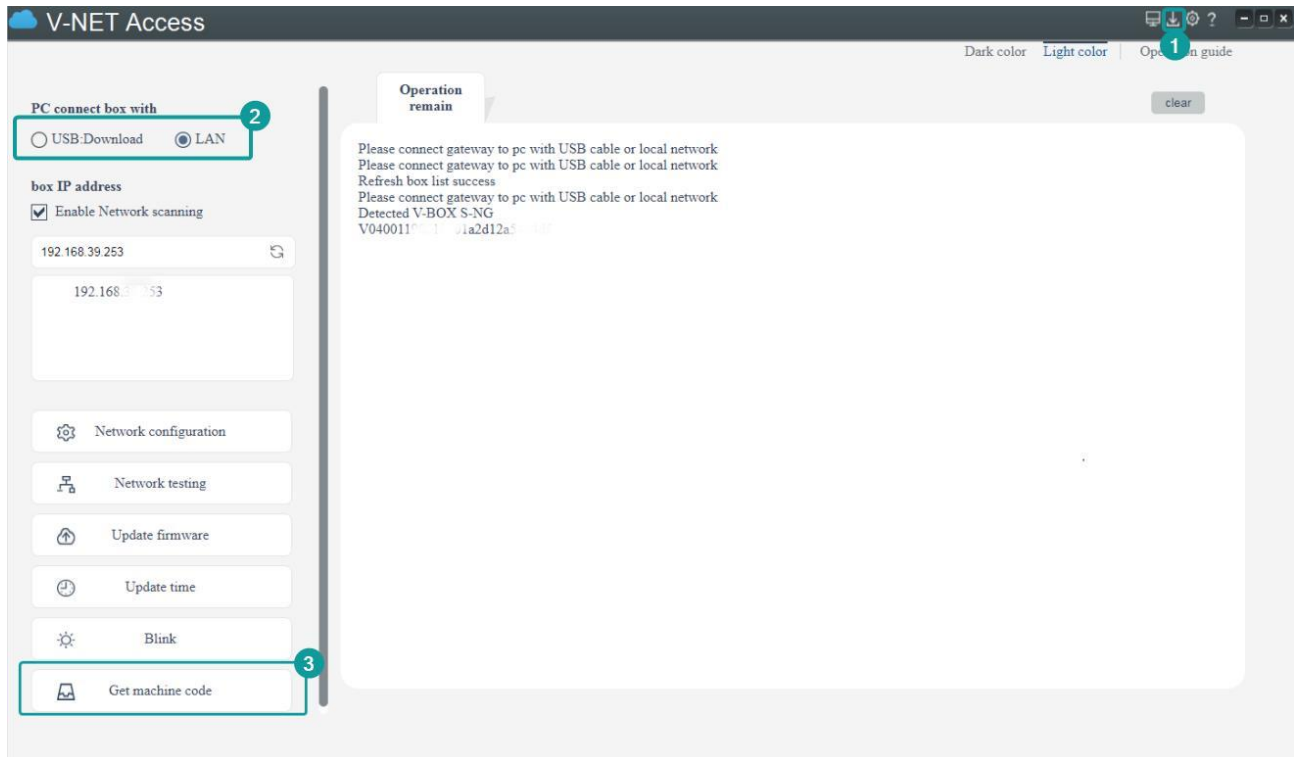


Figure 2-2

### Get ig HMI machine code

Plstudio configuration software-Project-Download -Machine Code-Get Machine Code, as shown in the figure below.



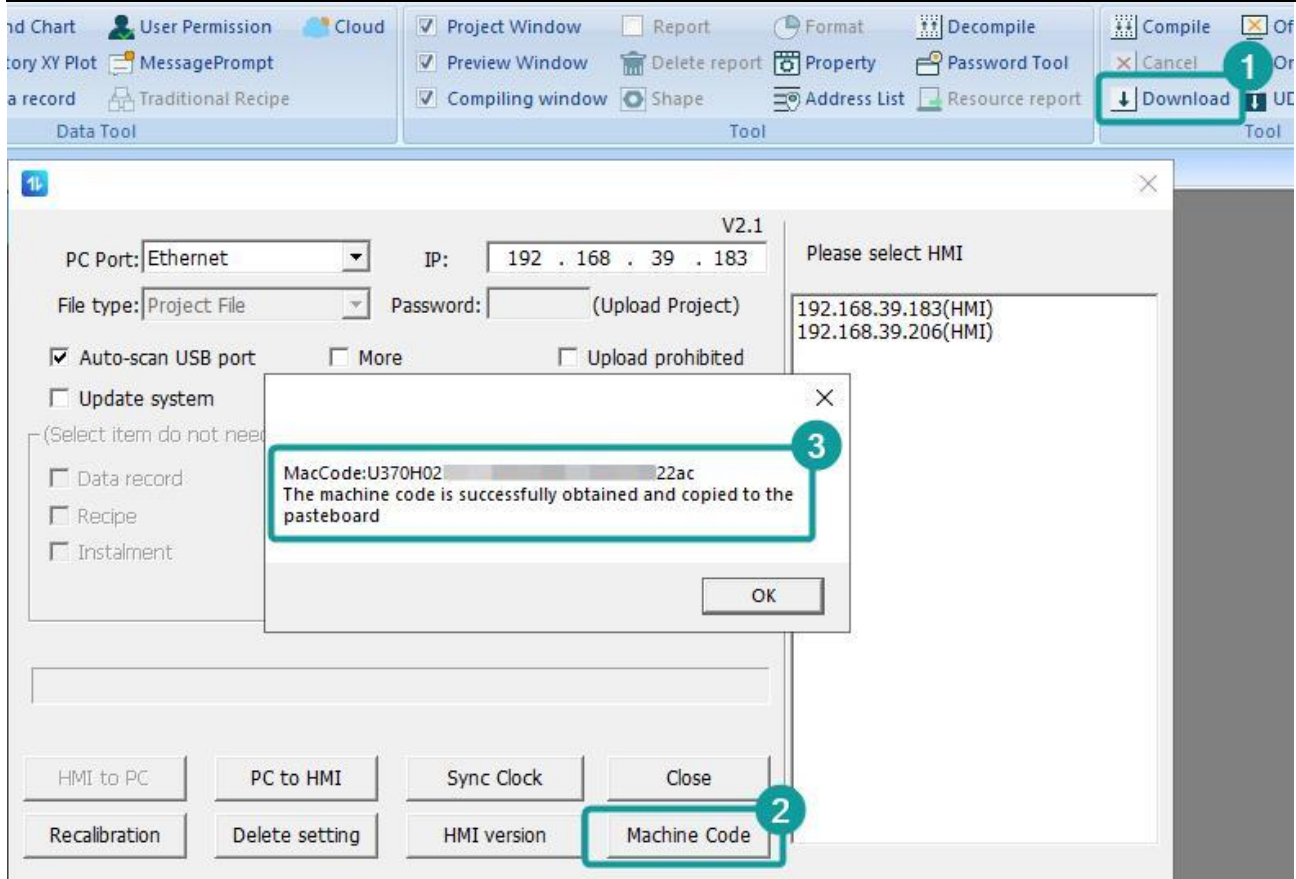


Figure 2-3

Long press the upper right corner of ig HMI to enter the background, and you can click "Local Information" → "Machine Information" → Machine Id" or scan the QR code to get it, as shown in the figure below.



Figure 2-4



## 2.2 My follow

My follow list mainly comes from all devices that user followed in PC and APP. Follow the device that needs to be viewed, and it will be in "My follow". The operation steps are as shown in the figure below.

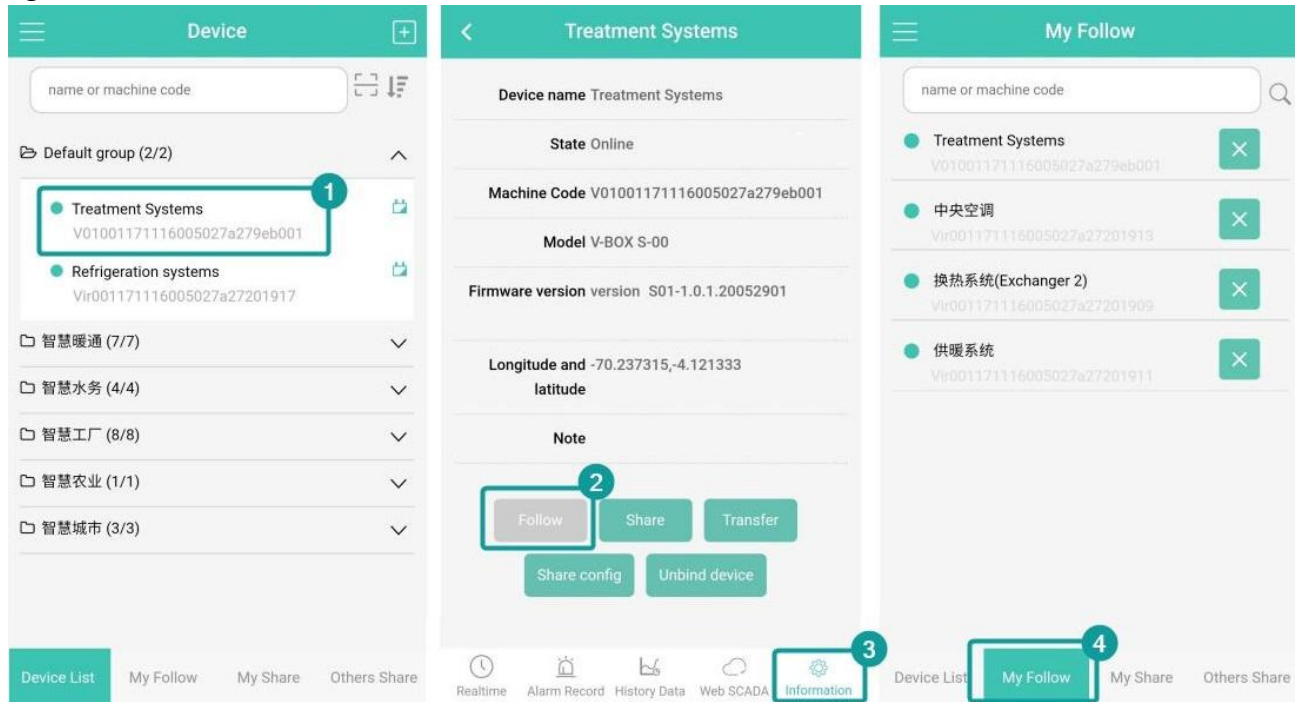



Figure 2-5

### Steps:

- ① Select a V-BOX/ig HIM.
- ② Select "Information".
- ③ After clicking "Follow", the device will be added to the follow list.
- ④ Go back to the main menu, click "My follow" and jump to the list of follows.
- ⑤ View the V-BOX /ig HMI of follow list, click  will cancel your follow. Click the device can jump to the device function module page.

## 2.3 Share device

**Share:** Refers to sharing the device with permission (read and write) to other accounts. After sharing, the device is still in its own device list, and other accounts can be viewed without receiving it. The operation steps are as shown in the figure below.

**My share:** The list of all V-BOX/ig HMI shared by the account to other accounts.

**Share with others:** The list of all V-BOX/ig HMI shared by other accounts to the account. All the data of devices can be viewed, but the configuration of devices cannot be modified.

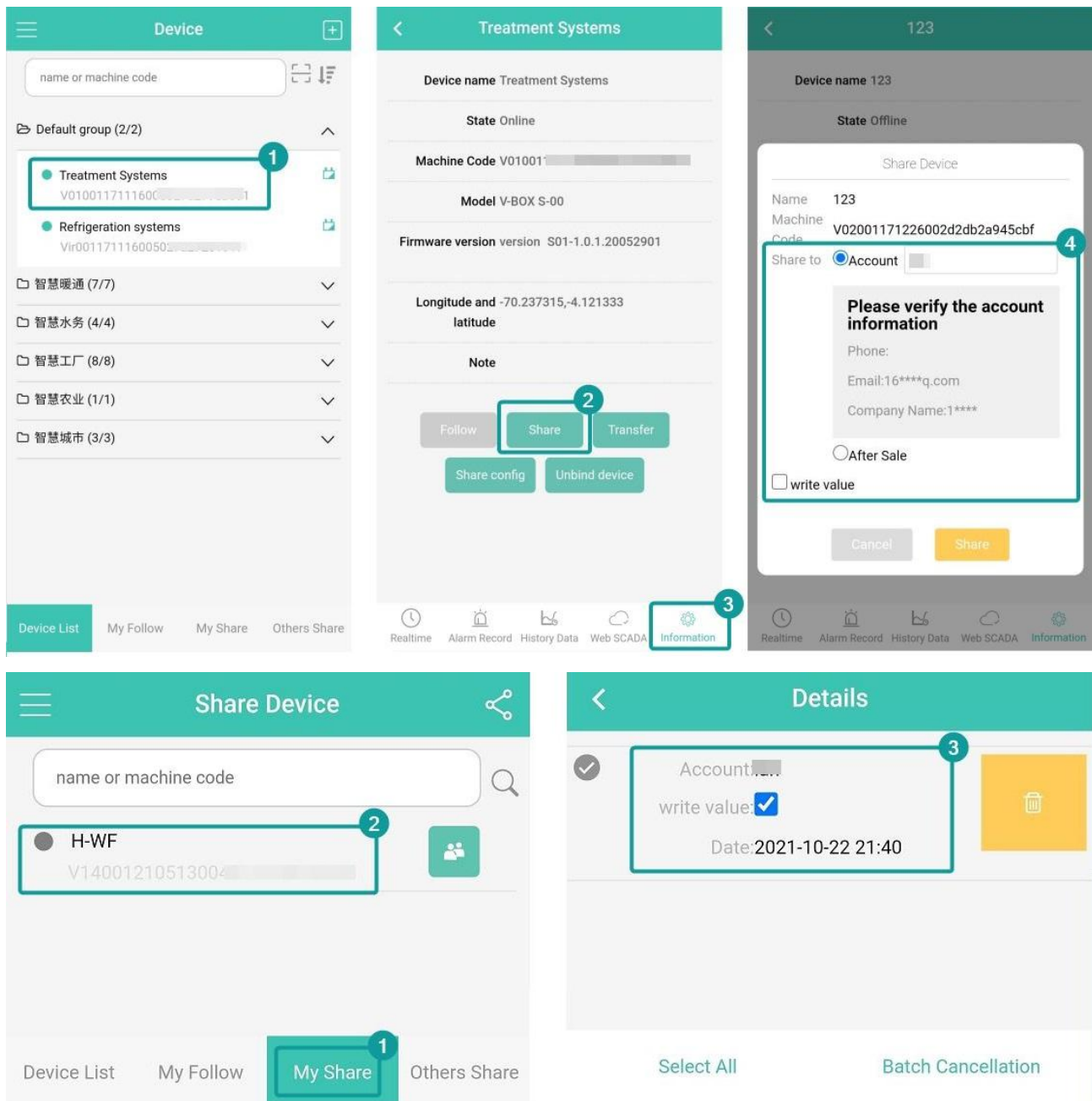


Figure 2-6

**Steps:**

- ① Select a V-BOX/ig HMI that need to be shared.
- ② Select "Information".
- ③ After clicking "Share".
- ④ Fill in the user name of the sharing account.
- ⑤ Carefully check the account information of the other party to confirm that the information is correct.
- ⑥ Write value to the monitoring point: Check this option to indicate that the account has the permission to write value.
- ⑦ Go back to the main menu and select "Share device".
- ⑧ In the share list ("My share" and "Share with others"), select the device you want to view, and click the share device details view button.

- ⑨ Share details page: View the information of all users shared by the device, modify the write value permission of the V-BOX/ig HMI, or delete the sharing of the V-BOX/ig HMI

## 2.4 Monitoring point

Monitoring points contain real-time data, alarm records, historical data. Custom monitoring screen can not add a certain monitoring point under the specified V-BOX/ig HMI to the custom monitoring point interface (configured by PC), only can operate the monitoring point or write values, confirm alarm messages, and view all alarm records and historical data.

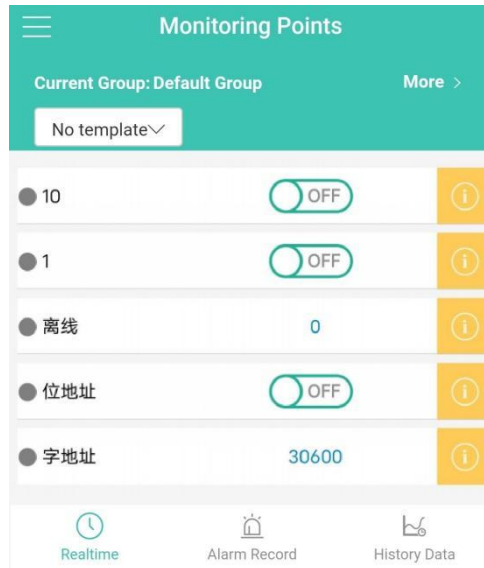


Figure 2-7

## 2.5 Map

V-NET map can view the distribution of bound devices under the account. The map interface can change the display effect and other functions by switching styles (point aggregation and point dispersion), as shown in the figure below.

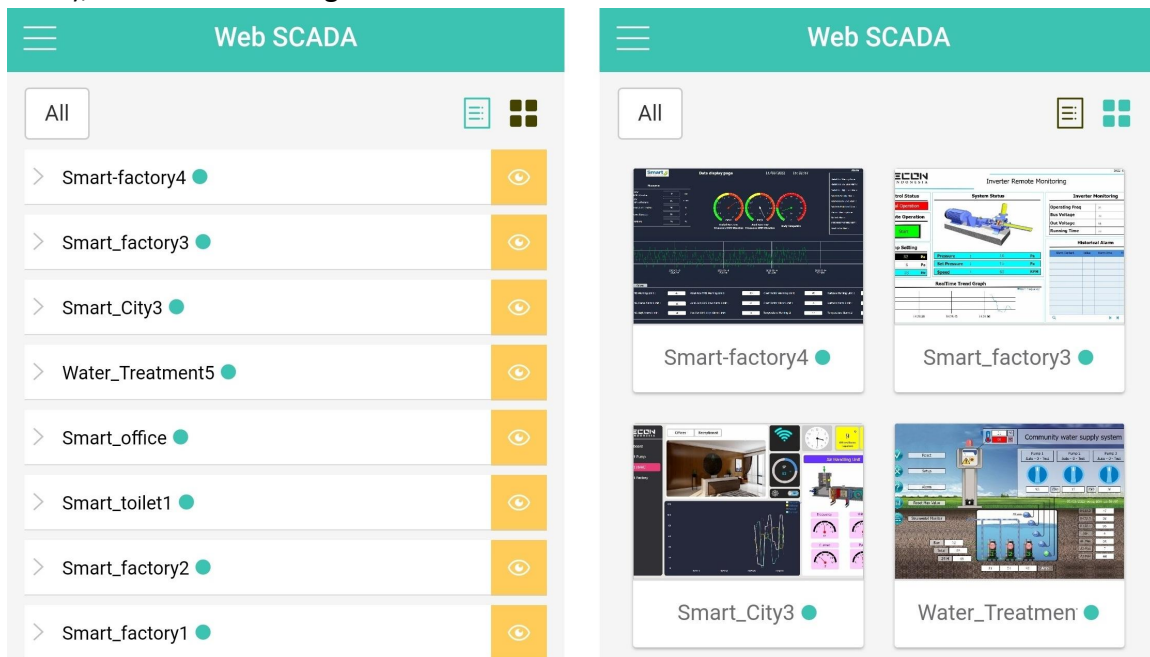


Figure 2-8

**Note:** The following functions are limited to Google map. The functions on the map are as follows:

- ① You can drag and drop the V-BOX/ig HMI directly on the map, so that the device can obtain the positioning information and update the coordinates of device.
- ② Point aggregation point dispersion function:
- ③ Point aggregation: Similar V-BOX/ig HMI in the map will be stacked together to display the number of the devices, and the icon of point aggregation will be a circle.
- ④ Point dispersion: Cancel the point aggregation function, and only V-BOX/ig HMI will be displayed on the map.
- ⑤ Click on the gathering point, V-BOX/ig HMI will spread out and the map zooms in at a certain scale. The specific meanings are as follows:

Icons	Content
	There are 6 V-BOXs or ig HMIs, and there are devices in alarm status.
	There are 5 V-BOXs or ig HMIs, and there is no alarms.

- ① : Display all the devices on the map.
- ② : Display all the alarmed devices on the map.
- ③ : Google map can effectively locate the position of the current account.
- ④ : Use Google map by default.
- ⑤ : Refresh the location and information of V-BOX/ig HMI in the current map.
- ⑥ : Click it to zoom in and out of the map, or you can zoom in and out of the map manually.

## 2.6 Web Cloud SCADA

The main function of cloud SCADA is to monitor the remote configuration screen, You can only view the Web cloud configuration content on the APP, but cannot modify or edit it. List and thumbnail display are supported. Select a certain module to enter the cloud SCADA operation interface, and you can operate all the configuration screens of the cloud SCADA, as shown in the figure below.

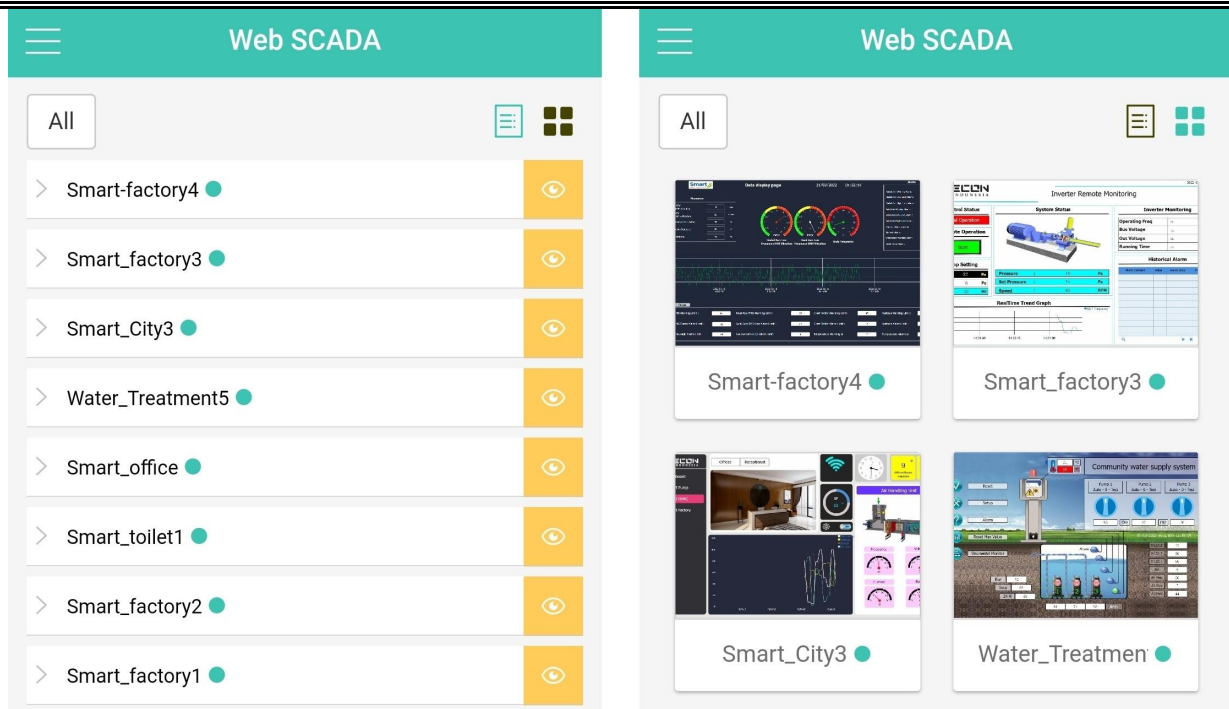


Figure 2-9

## 2.7 Message

The message module contains: My request, request to share, share device, transfer device, system announcement, as shown in the figure below.

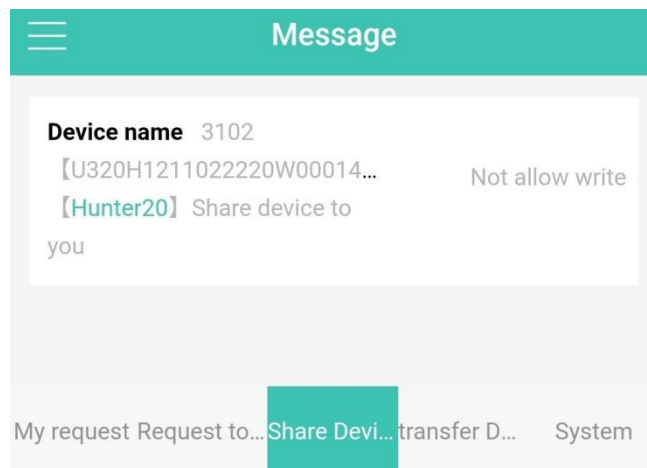


Figure 2-10

- ① **My request:** Display my account requesting other accounts to share the information and status of V-BOX/ig HMI. This operation can only be initiated by PC.
- ② **Request to share:** Display other accounts requesting my account to share the information and status of V-BOX/ig HMI
- ③ **Share devices:** Display the device names, machine codes, sharer information and permissions of all V-BOX/ig HMI shared by other accounts to my account.
- ④ **Transfer device:** Display the device names, machine codes, sharer information and operation status of all V-BOX/ig HMI transferred to my account by other accounts.
- ⑤ **System:** System upgrade and maintenance, V-NET platform marketing and other announcements.

## 2.8 Account management

Configure user information management: Including administrator account name, modify avatar, modify mailbox, and modify password.

### 2.8.1 Modify avatar

Upload the user avatar function. If the user does not upload a avatar, the default avatar of the system is used. As shown in the figure below.

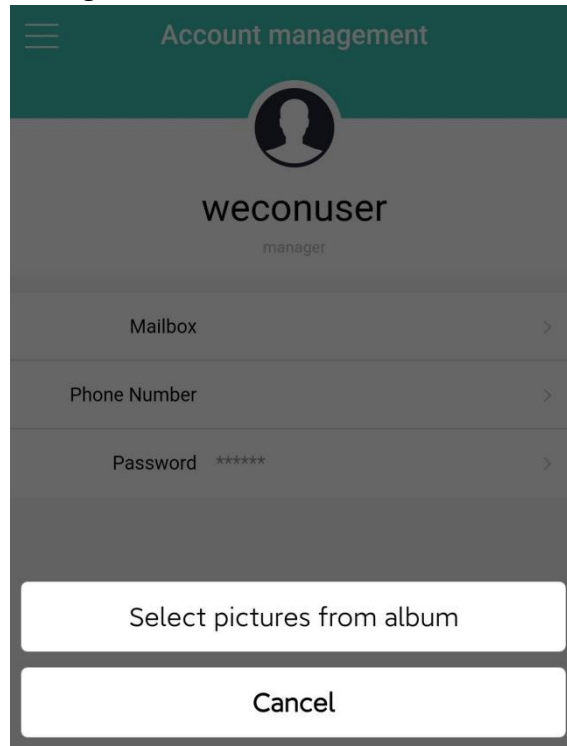


Figure 2-11

### 2.8.2 Modify mailbox

When binding/replace mailbox, you need to enter the mailbox to bind/replace. The operation will succeed only if the mailbox entered by the user is legitimate, as shown in the figure below.

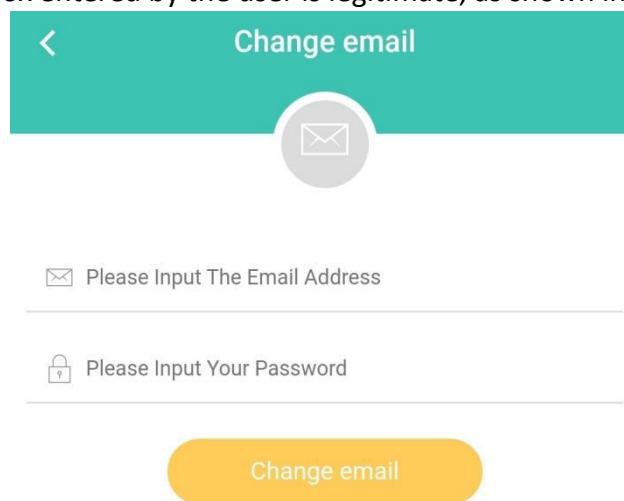


Figure 2-12

### 2.8.3 Change password

The user needs to input the original password and the new password. Only when the password entered by the user is legitimate can the operation be successful, as shown in the figure below.

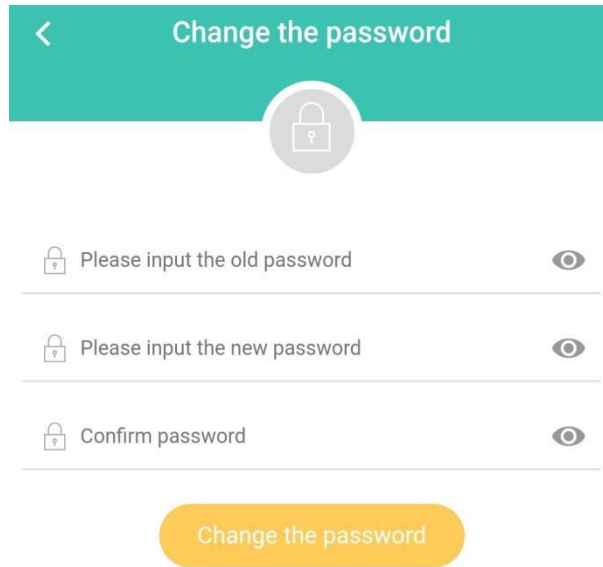


Figure 2-13

## 2.9 Settings

Settings: You can clear the cache of APP and view the APP version information, homepage settings, cloud SCADA multilingual button hide settings, product information, etc., as shown in the figure below.

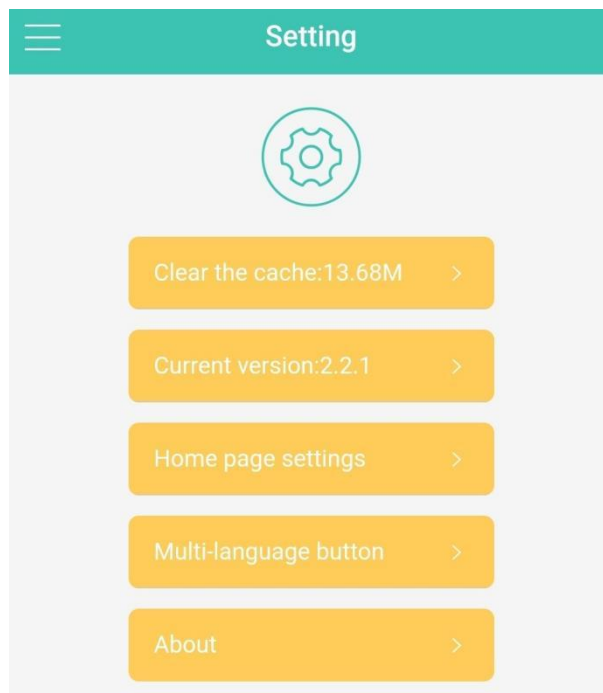


Figure 2-14



### 2.9.1 Clear the cache

Clean all files left after using the software, completely delete temporary files from the hard disk, and free up more space, as shown in the figure below.

**Note:** After "clear the cache", the account will log out.

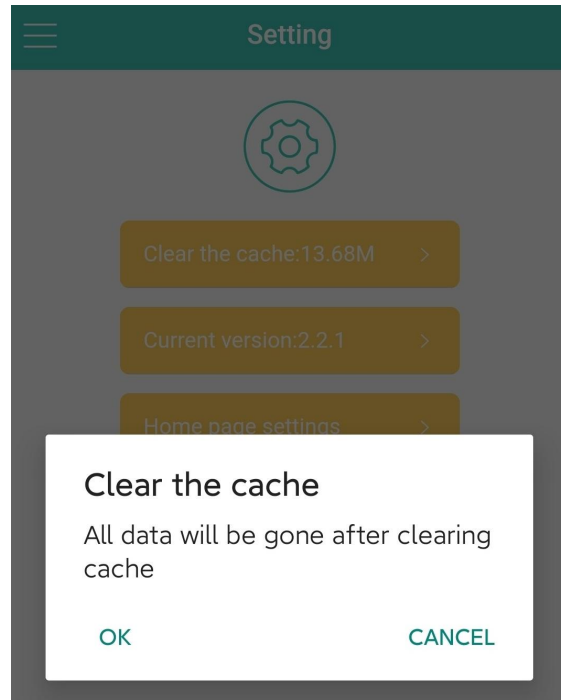


Figure 2-15

### 2.9.2 Current version

If the current version of the APP is not the latest release in official website, click there to automatically update the version, as shown in the figure below.

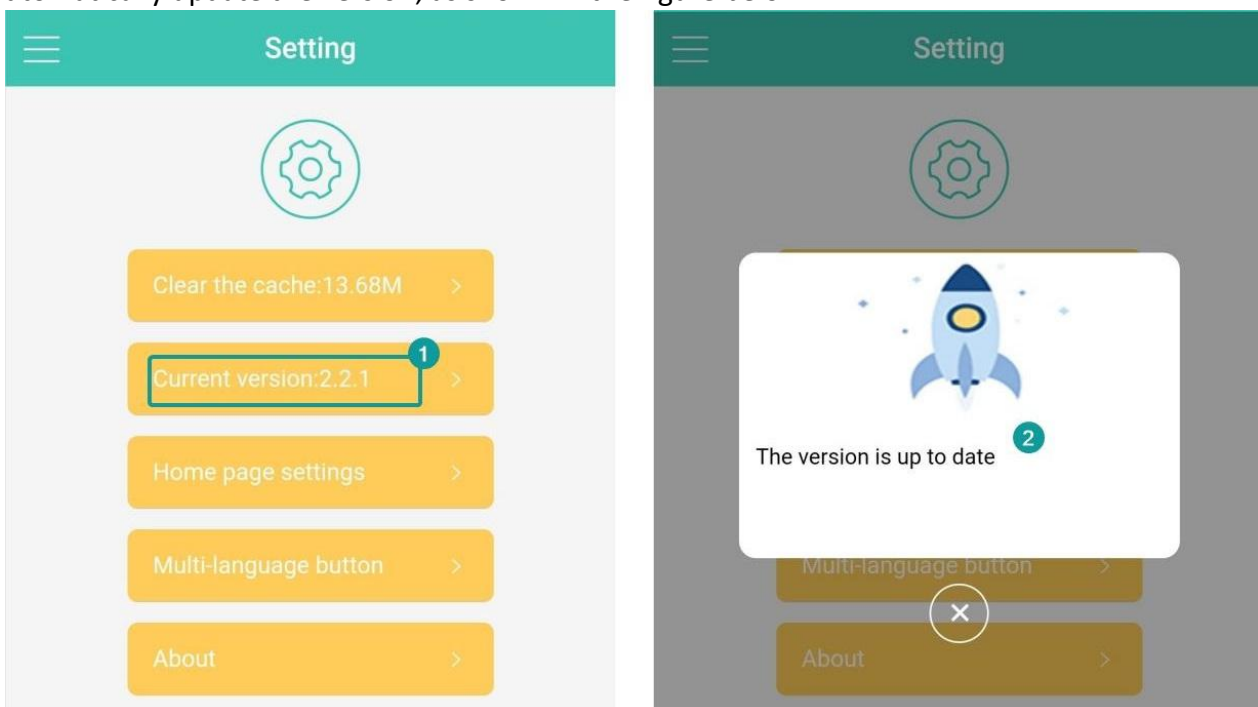


Figure 2-16

### 2.9.3 Homepage settings

The login homepage of APP displays web cloud SCADA page by default. It supports the display of device, monitoring points, and Web cloud SCADA, as shown in the figure below.

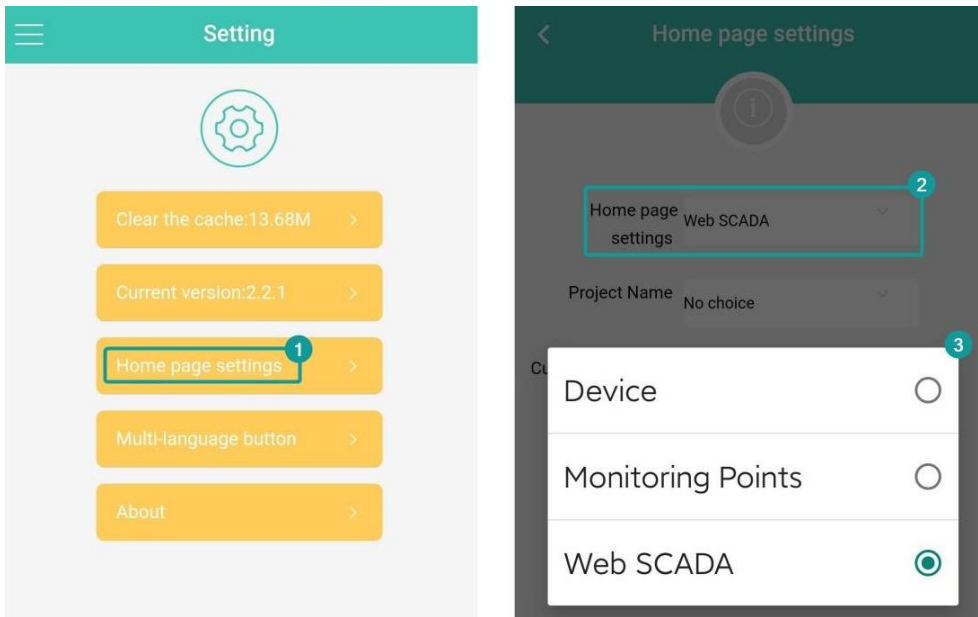


Figure 2-17

**Steps:**

- ① Select homepage settings.
- ② Device, monitoring points, and Web cloud SCADA are optional.
- ③ If you want the homepage to display the cloud SCADA screen, select Web cloud SCADA as the current homepage.
- ④ Click “OK”, and restart APP to effect afterwards.

### 2.9.4 Multilingual button

Hide the multilingual buttons of the cloud SCADA display screen, as shown in the figure below.

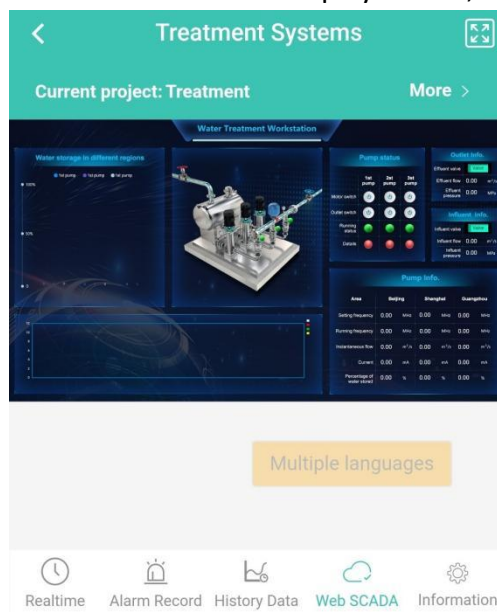


Figure 2-18

## 2.9.5 About

Display the company's name, official website address, company address and other details.

# 3. V-BOX module

## 3.1 Real-time data

In the "real-time data" interface, you can modify the real-time data of the monitoring points, and the monitoring points of the real-time data are configured by PC. Click the text box in the "Value" column of a monitoring point in the list to enter the editing status, input the modified value, and click "modify" to modify the real-time data of this monitoring point to the input value. Click "More" in the upper right corner to view browse the monitoring point data of other groups, as shown in the figure below.

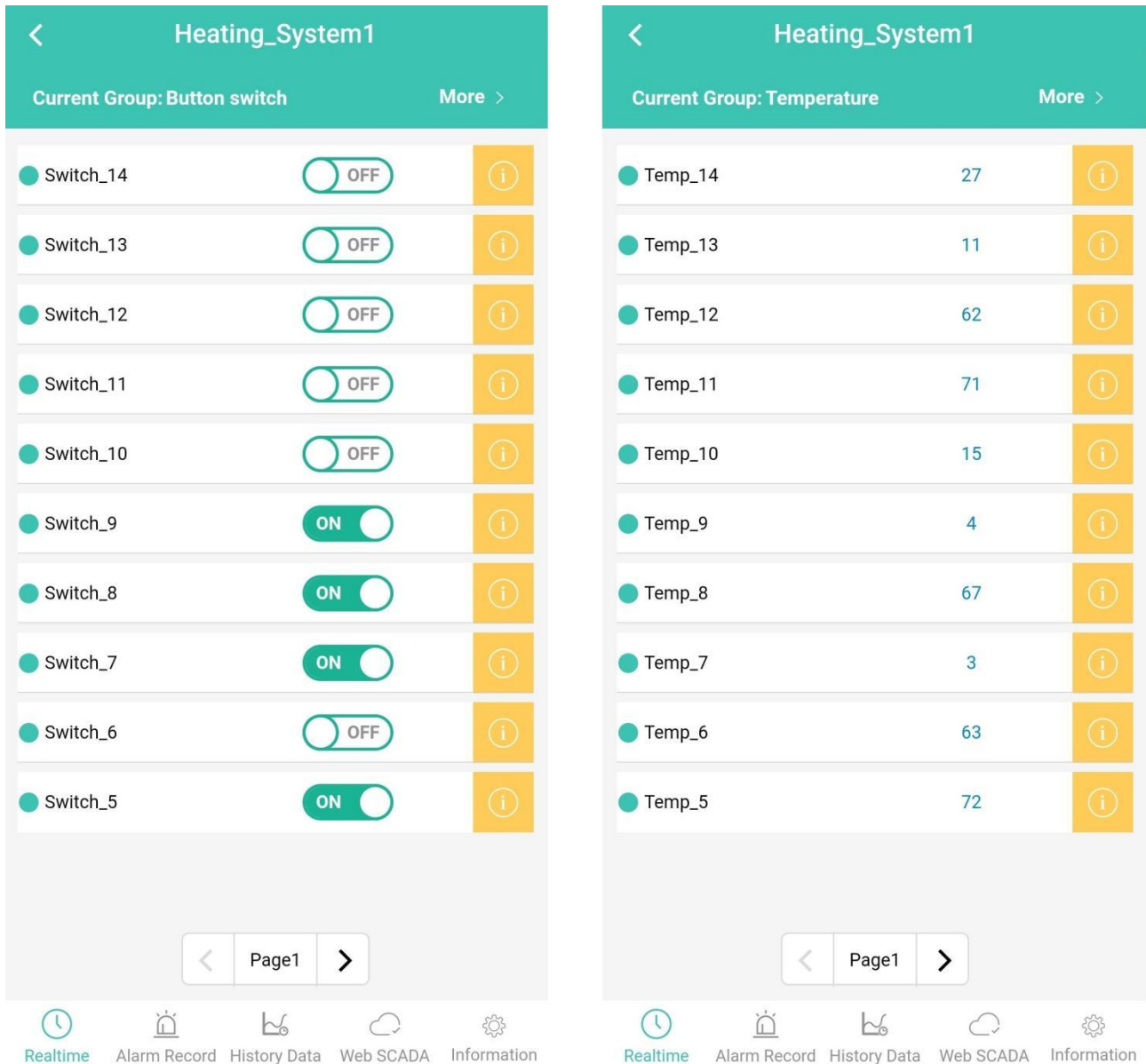


Figure 3-1

## 4.2 Historical data

In the "Historical Data" sub-page, you can query historical data by selecting grouping, entering monitoring points, start and end dates and other conditions. The display of historical data can be viewed in list and curve, as shown in the figure below.

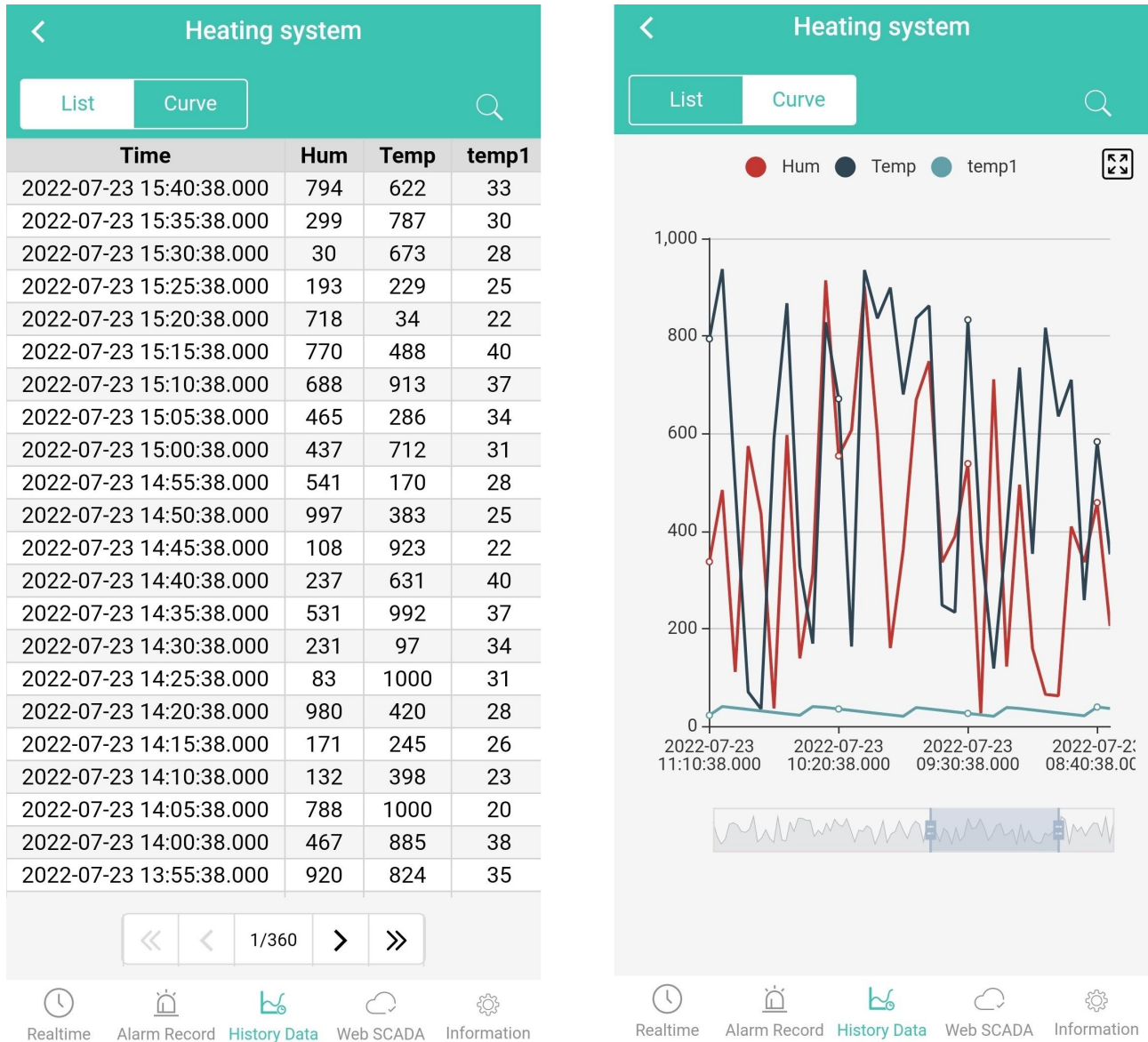


Figure 3-2

## 4.3 Web Cloud SCADA

The main function of cloud configuration is to monitor the configuration screen remotely. Select a device, and click "Web SCADA", it will display a SCADA project bound to the V-BOX, as shown in the figure below.

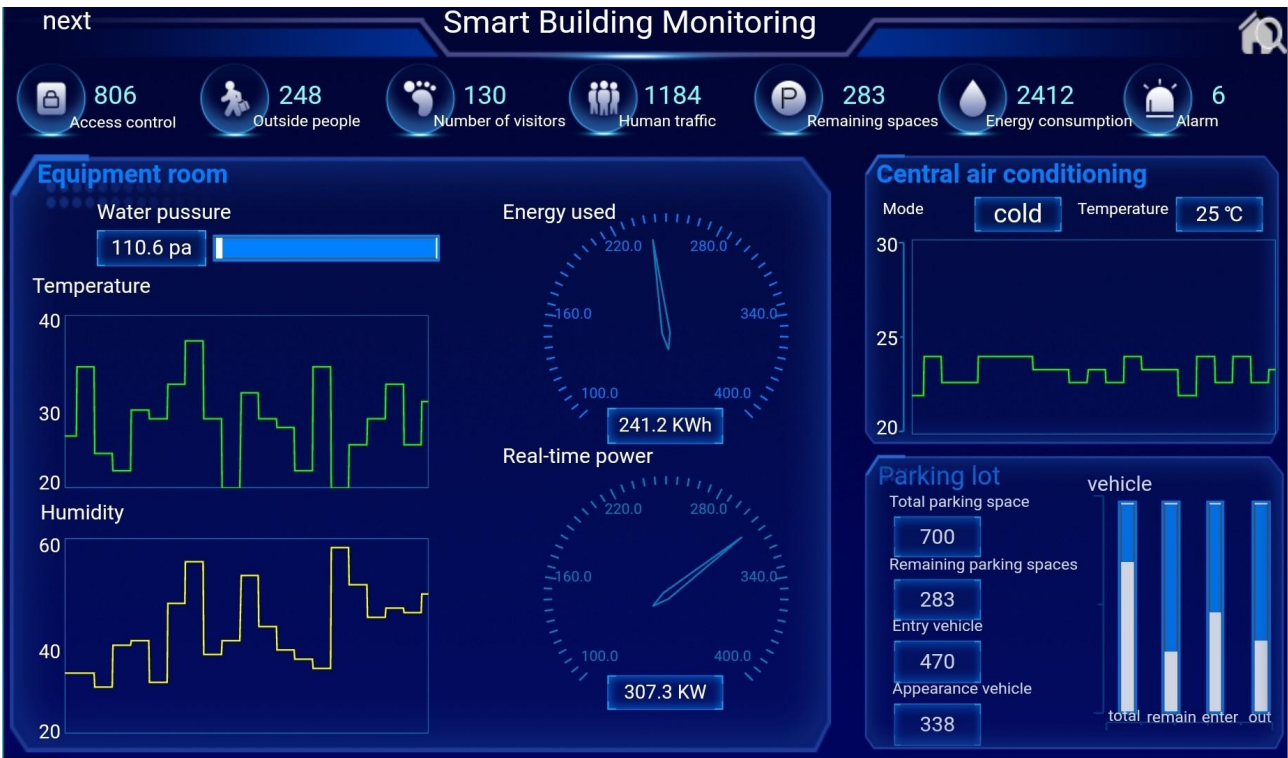


Figure 3-3

If there is no SCADA projects bound to the V-BOX, the interface will remind you to make a project of the V-BOX on the Web SCADA platform, as shown in the figure below.

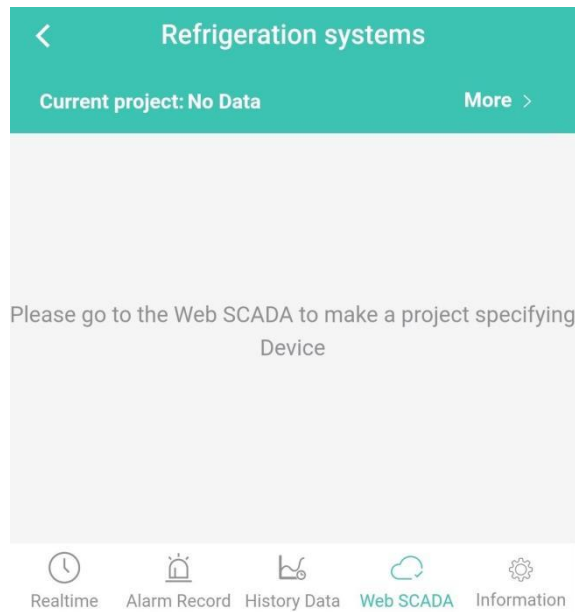


Figure 3-4

### 3.4 Device information

After the administrator adds a smart box, click a V-BOX in the device list to enter the V-BOX details interface. In "device information", you could view the device name, online status, machine code information, device model, firmware version, longitude and latitude information, etc., as shown in the figure below.

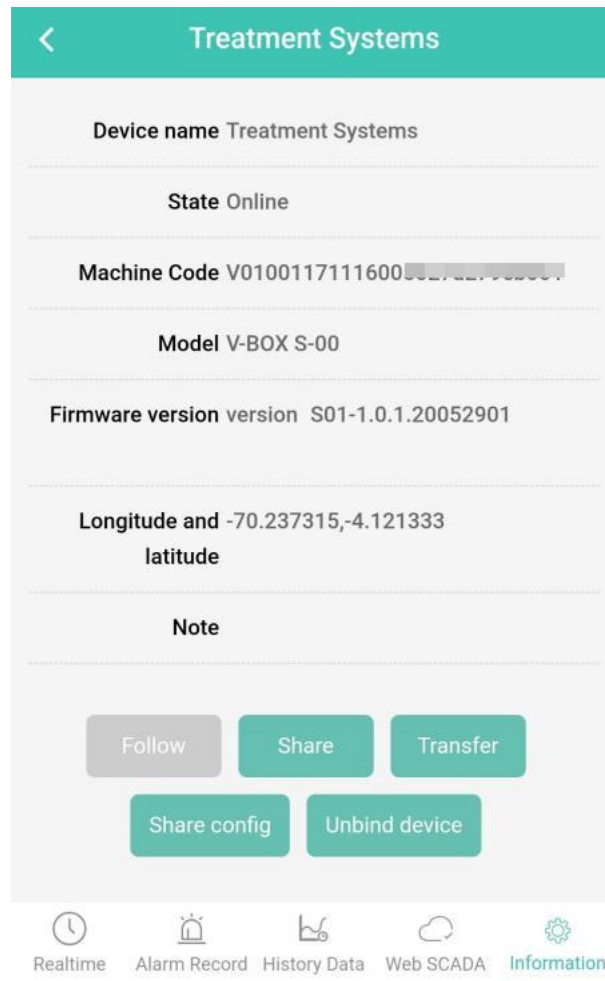


Figure 3-5

**Follow:** Select a V-BOX and Click “Follow”, and you could view the V-BOX in my follow list. Click “Cancel” to cancel the follow. (For details, please refer to "My follow")

**Share:** The V-BOX can be shared with other accounts for browsing (other accounts can only browse data, and the permission to write values at monitoring points are limited). After sharing successfully, check it in the "My Share" list of "Device" in the main menu. (For details, please refer to "Share device").

**Transfer:** When a V-BOX is transferred from one account to another, any other information will not change except for the user. (For details, please refer to “Transfer device”)

**Share configuration:** Copy the configuration of the V-BOX, fill in the validity period of the sharing code, and generate the sharing code. The generated sharing code can only be used in PC client. Login in PC client, select the V-BOX with the same model and click "basic configuration" → “Sharing code import”, as shown in the figure below.



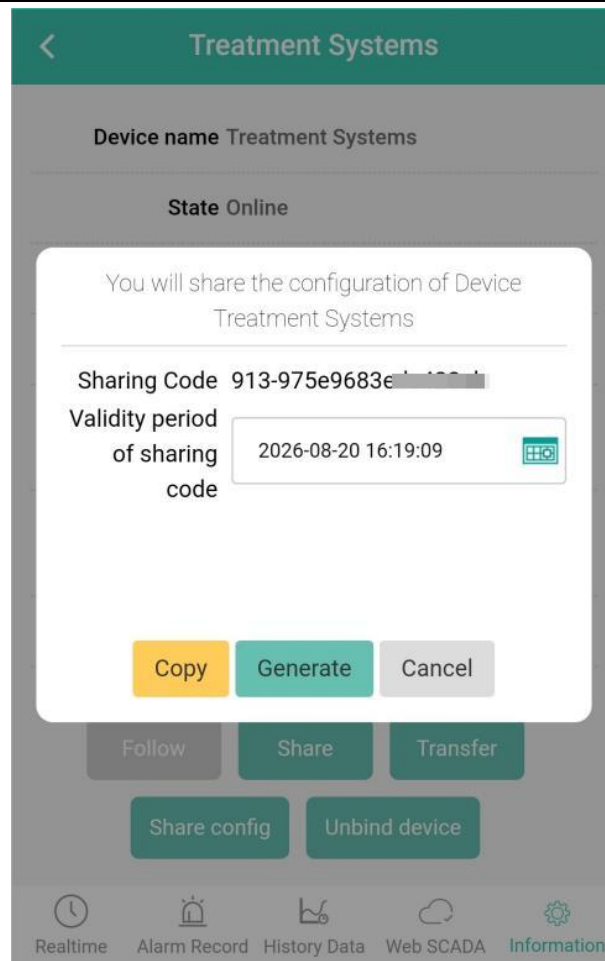


Figure 3-6

## 4. ig series IoT HMI

### 4.1 Real-time data

In the "real-time data" interface, you can modify the real-time data of a monitoring point. Click the text box in the "Value" column of a monitoring point in the list to enter the editing status to input the modified value, and click "modify" to modify the real-time data of the monitoring point to the input value. Click "More" in the upper right corner to view browse the monitoring point data of other groups, as shown in the figure below.



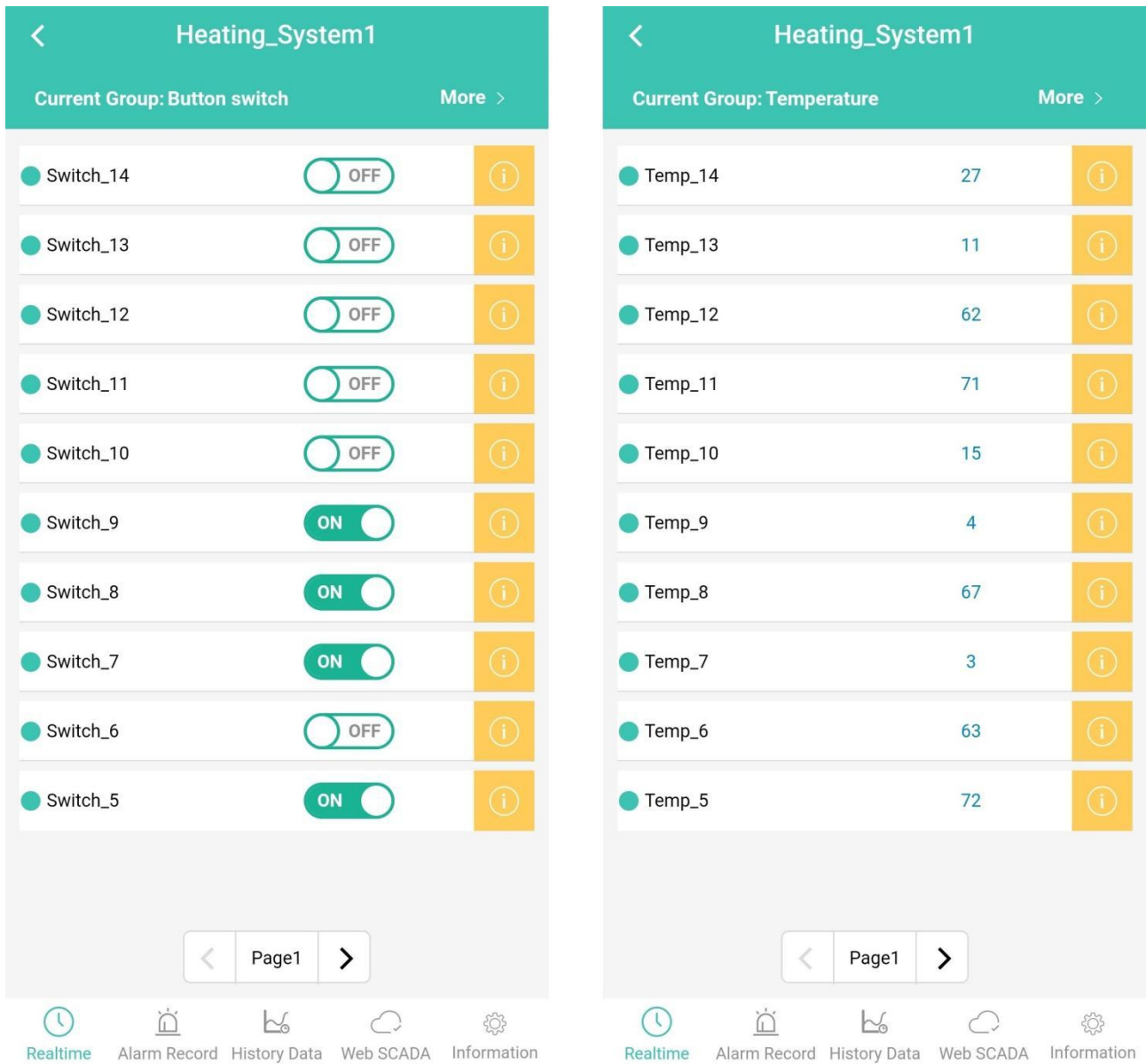


Figure 4-1

## 4.2 Historical data

In the "Historical Data" sub-page, you can delete historical data as well as query it by selecting grouping, entering monitoring points, start and end dates and other conditions. The display of historical data can be viewed in list and curve, as shown in the figure below.

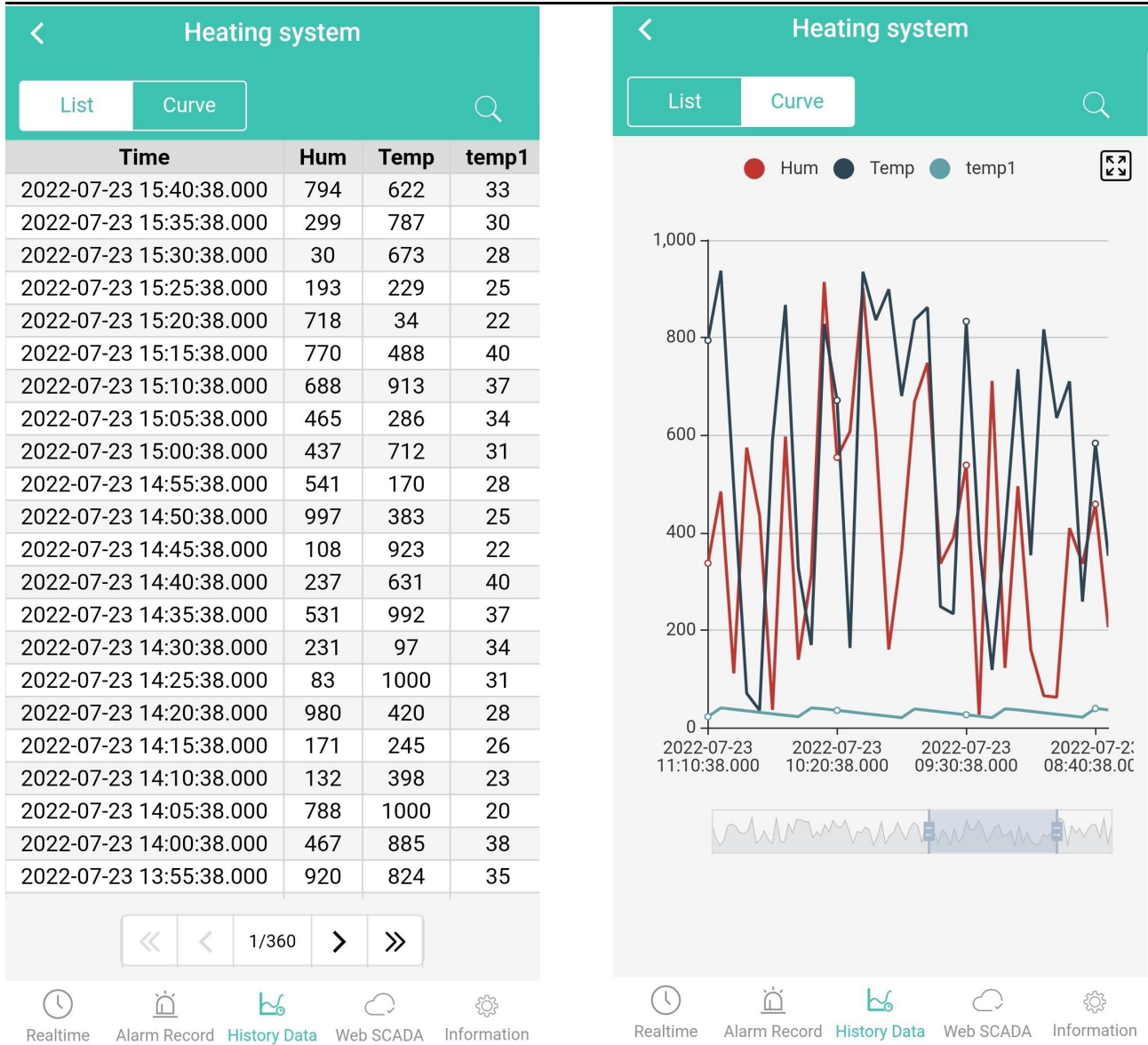


Figure 4-2

### 4.3 Remote monitoring

The remote monitoring module can display the project page of the current screen in real time, and can realize the operation of the project, remote monitoring and control of the screen, as shown in the figure below.

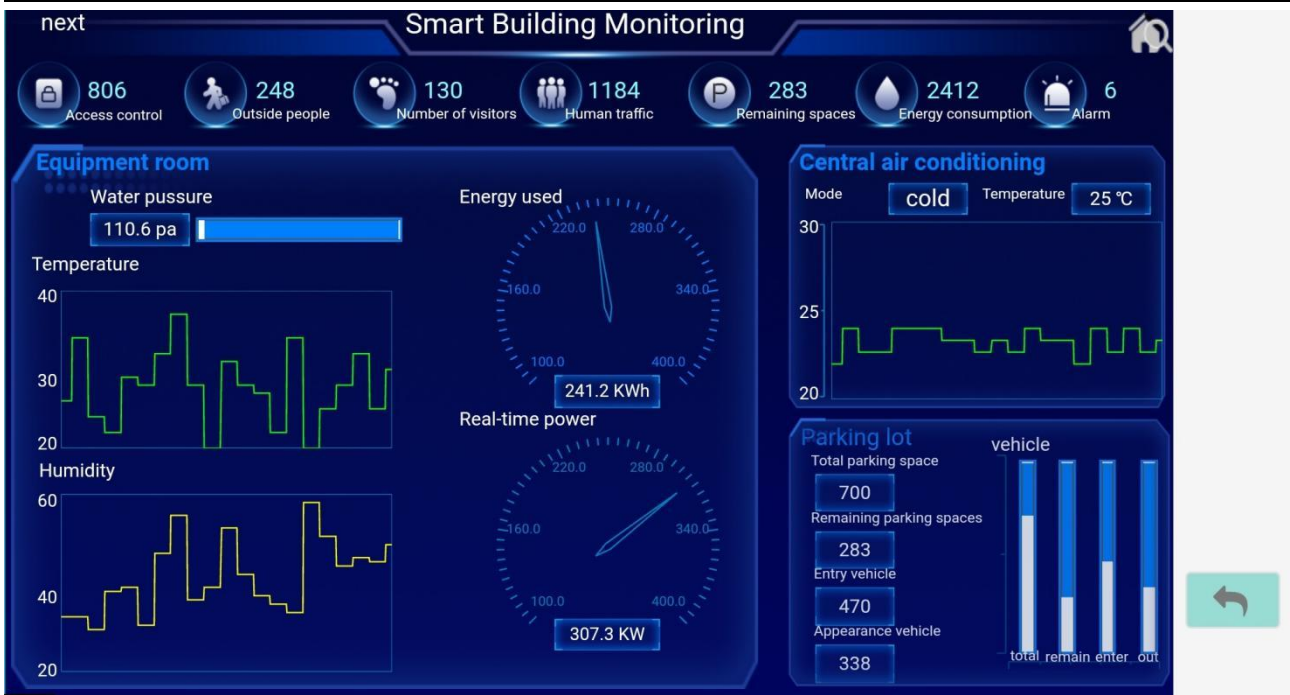


Figure 4-3

**Note:**

A maximum of 5 remote monitoring screens can be displayed simultaneously on the Web+HMI, and there will be a prompt if it exceeds. "Remote monitoring access quantity reach the upper limit!", as shown in the figure below.



Let the eyes rest

The device configuration project cannot be loaded temporarily!

Figure 4-4

If the ig HMI is not connected to the network or the device is not checked with the enable function, there will be a prompt: "The device SCADA project cannot be loaded successfully!".

## 4.5 Device information

After the administrator adds an ig HMI, click ig HMI in the device list to enter the ig HMI details interface. In "device information", you could view the device name, online status, machine code information, device model, firmware version, longitude and latitude information, etc., as shown in the figure below.

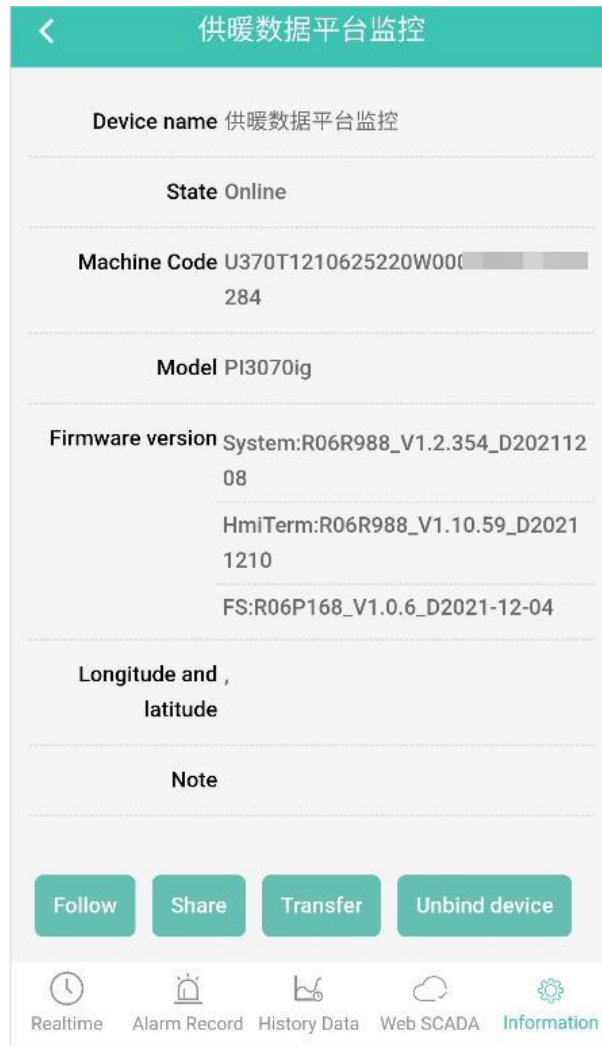


Figure 4-5

**Follow:** Select an ig HMI and click “Follow”, and you could view the ig HMI in my follow list. Click “Cancel” to cancel the follow. (For details, please refer to ["My follow"](#))

**Share:** The ig HMI can be shared with other accounts for browsing (other accounts can only browse data, and the permission to write values at monitoring points are limited). After sharing successfully, check it in the "My Share" list of "Device" in the main menu. (For details, please refer to ["Share device"](#)).

**Transfer:** When an ig HMI is transferred from one account to another, any other information will not change except for the user. (For details, please refer to ["Transfer device"](#))

## 5. Transfer device

When a V-BOX is transferred from one account to another, any other information will not change except for the user. After receiving the device by the other account, the transfer is successful, and the device will not be under your account, as shown in the figure below.

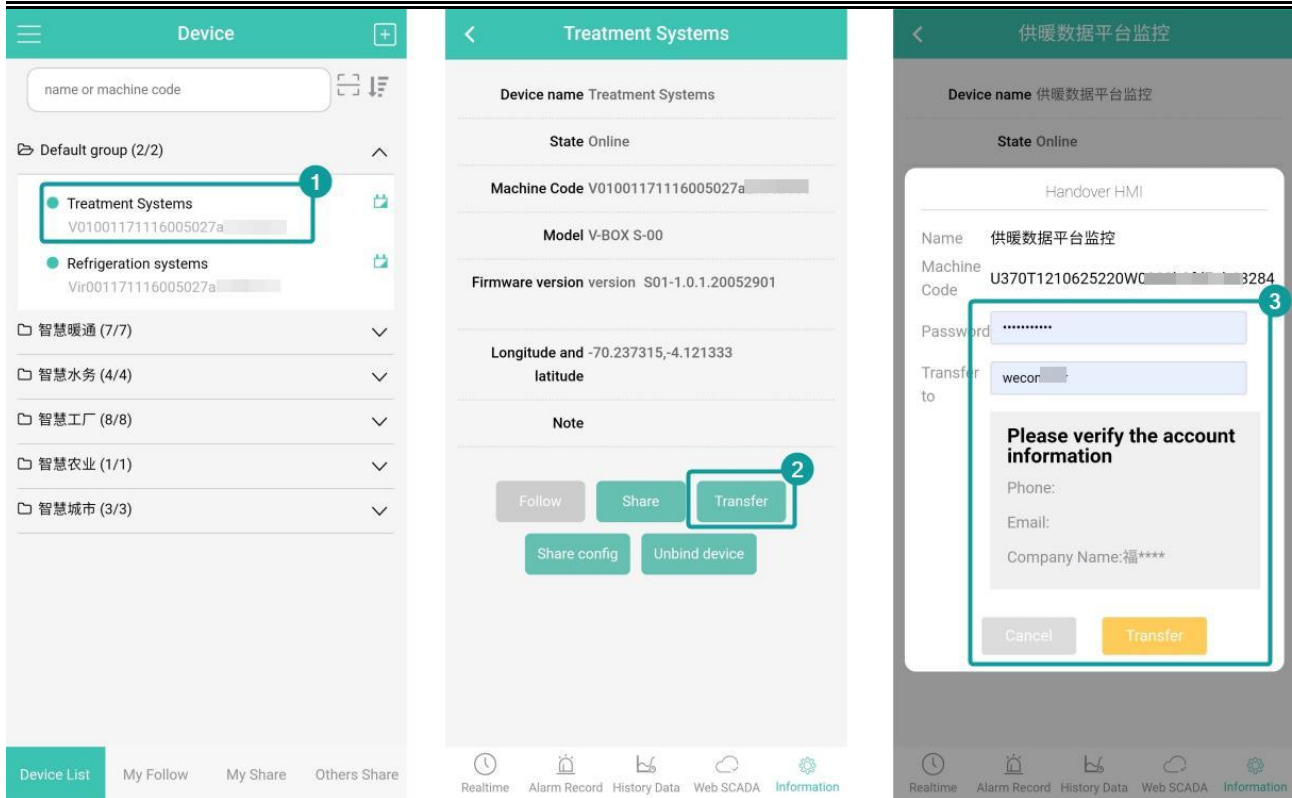


Figure 5-1

**Steps:**

- ① Select a V-BOX/ig HMI that need to be transferred.
- ② Select device information after selecting the device.
- ③ Click “transfer”.
- ④ Fill in the user name of the transfer account.
- ⑤ Check the account information.
- ⑥ After confirmation, wait for the other party's account to receive it.